

FUJIFILM  
X | GFX



GFX 100II  
PERFORMANCE,  
MEET CREATIVITY



**GFX 100 II**  
**PERFORMANCE,**  
**MEET CREATIVITY**

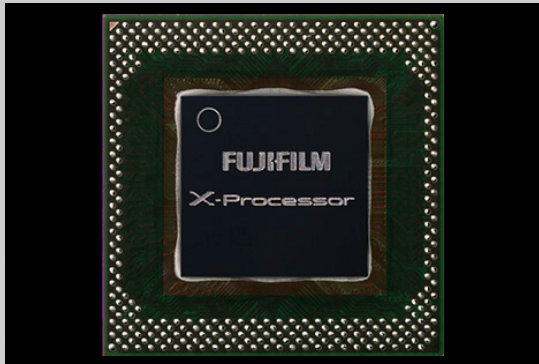


LARGE FORMAT  
**102 MEGAPIXEL**  
 BSI CMOS II HS SENSOR

5TH GEN  
**X PROCESSOR 5**  
 CPU

UP TO  
**8 STOPS**  
 IBIS

CINEMA  
**8K VIDEO**  
 PRORES RAW



**HIGH SPEED PERFORMANCE**

- X-Processor 5 with AI Processor
- 8fps Continuous Shooting
- 10-bit HEIF Image Format
- REALA ACE Film Simulation
- 5.3fps Blackout-Free Burst



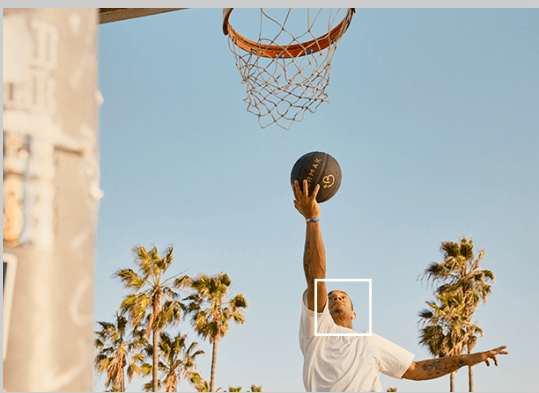
**DURABLE MODERN DESIGN**

- BISHAMON-TEX™ Leather Pattern
- Weather Resistant
- Optional Grip VG-GFX100 II
- Supports EVF tilt adapter EVF-TL1
- CFexpress Type B / SD UHS-II



**ULTIMATE IMAGE QUALITY**

- 16-bit RAW with wider dynamic range
- ISO 80 Standard Sensitivity
- 400MP Pixel Shift Multi-Shot
- IPTC metadata
- AI Auto White Balance



**AI/DEEP LEARNING AUTOFOCUS**

- Subject Detection AF
- 8-Way Focus Lever
- 425 Phase Detection AF Points
- AF-C / Zone Custom Setting
- Low-light Focusing down to -5EV



**FRAME WITH CONFIDENCE**

- Up to 8.0 Stops I.B.I.S.
- 9.44 Million Dot 1.0x EVF
- 2.36M-dot 3-way Tilting Touch LCD
- 4 customizable touch function (T-Fn)
- 2.09-inch Top LCD Monitor



**CINEMA QUALITY PERFORMANCE**

- 8K/30P 4:2:2 10-bit
- 14+ Stops Dynamic Range \*1
- 4K/60P - 1080/120P High-speed Rec.
- Recording to External SSD via USB
- Built-In Anamorphic Support

\*1 When setting to F-Log2 D



**GFX 100 II**  
PERFORMANCE,  
MEET CREATIVITY



## OPTIONS



**BODY ONLY**  
MSRP: \$10,124.99

## INCLUDED IN THE BOX

INTERCHANGEABLE ELECTRONIC VIEWFINDER EVF-GFX3, LI-ION BATTERY NP-W235, AC POWER ADAPTER, AC-5VJ PLUG ADAPTER, USB CABLE, SHOULDER STRAP, BODY CAP, HOT SHOE COVER, VERTICAL BATTERY GRIP CONNECTOR COVER, MEMORY CARD SLOT COVER, SYNC TERMINAL COVER

## ACCESSORIES



**BC-W1235 BATTERY CHARGER**  
MSRP: \$100



**BATTERY GRIP**  
MSRP: \$680



**LI-ION BATTERY NP-W235**  
MSRP: \$100



**EVF-TL1**  
MSRP: \$750



**COOLING FAN FAN-001**  
MSRP: \$260

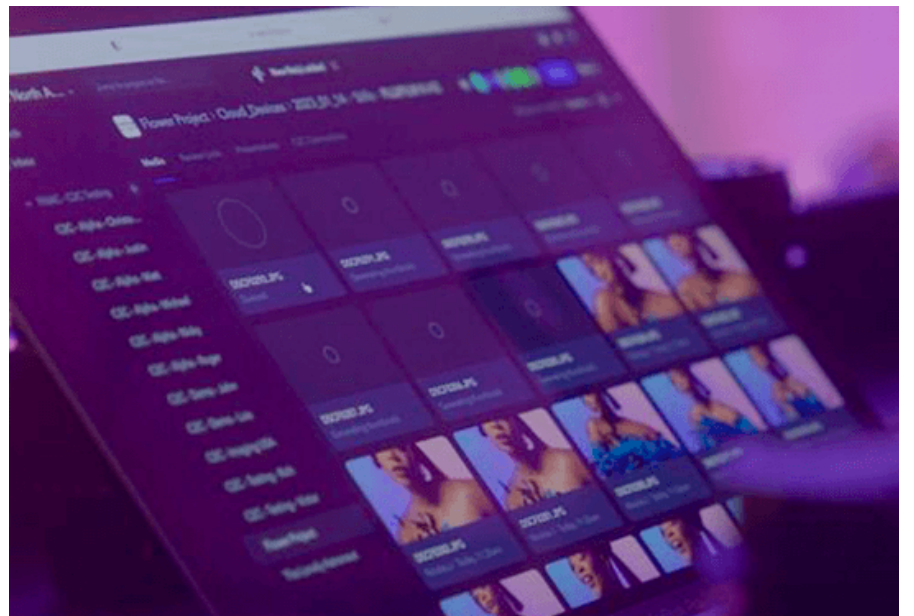
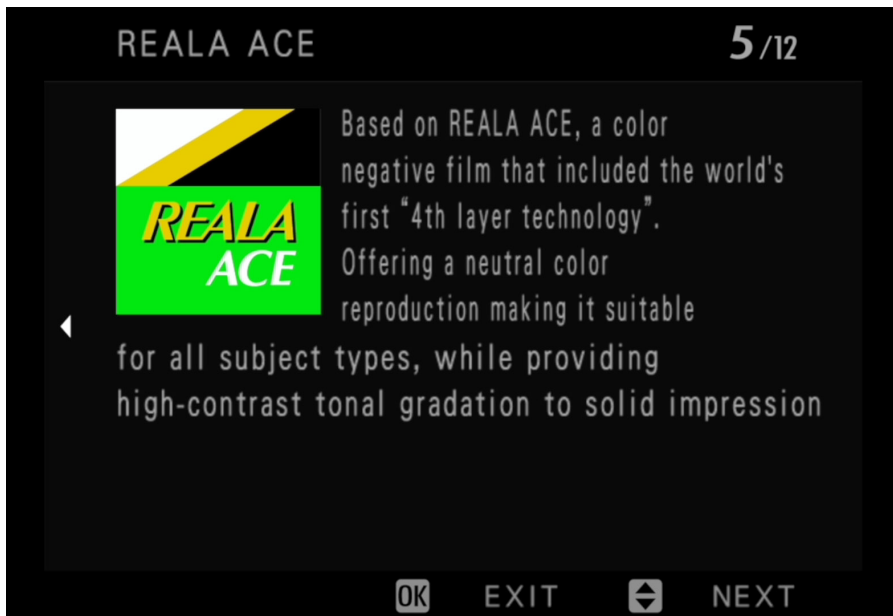


**MCEX-18G WR**  
MSRP: \$410

**MCEX-45G WR**  
MSRP: \$410



**GFX 100 II**  
PERFORMANCE,  
MEET CREATIVITY



## FILM SIMULATION SETTINGS

Use the Fn dial to quickly change the 20 FILM SIMULATION modes. The FN dial can also be used to change ISO. Press the Q button to navigate through the descriptions of the other FILM SIMULATION modes to find its unique characteristics. Rotate the Fn Dial to navigate through the descriptions of the various FILM SIMULATIONS to find the one that best suits the scene.

## FRAME.IO – CAMERA TO CLOUD

To connect to Frame.IO, go to MENU > SET UP > NETWORK/USB SETTING > Frame.io Camera to Cloud > CONNECT > WIRELESS LAN or WIRED LAN > ACCESS POINT SETTING > MANUAL SETUP > SELECT FROM NETWORK LIST. Select the correct network and input the password. Once connected, select FINISH. Select GET PAIRING CODE. Input that code into your frame.io folder in the C2C Device Tab.



## 6 CUSTOM POSITIONS

Set the mode dial to one of the custom setting positions (C1-C6) which can be assigned to frequently used settings including exposure and focusing options. They can also be set to either the photo or video mode. Adjustments made in the camera's menu will automatically be stored; select DISABLE in the AUTO UPDATE SETTING menu if you prefer not to have changes saved automatically.

## SUB MONITOR CUSTOMIZATION

Go to MENU > SET UP > SCREEN SET-UP > SUB MONITOR SETTING and choose whether you want to change the STILL MODE or the MOVIE MODE options. Select INFORMATION and scroll to the section of the screen you want to change and press OK and select the settings you want to assign to the section.



**GFX 100 II**  
PERFORMANCE,  
MEET CREATIVITY

**LEARN  
MORE**



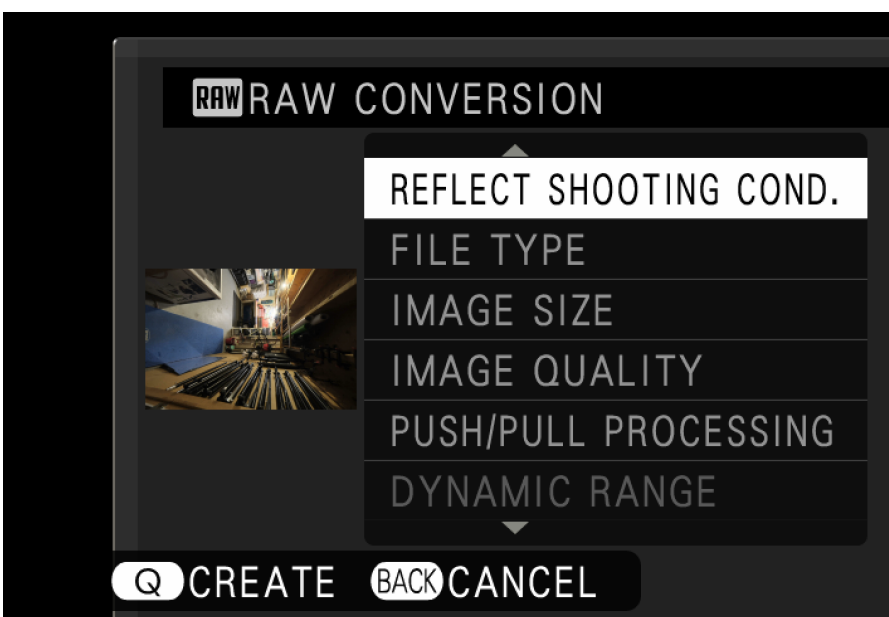
## VIDEO RECORDING INDICATORS

**REC FRAME INDICATOR:** Press MENU/OK > Movie Setting > REC FRAME INDICATOR > ON to enable a RED frame around the LCD when video is being recorded. For High-Speed video, a BLUE frame will appear instead. **TALLY LIGHT:** Press MENU/OK > Movie Setting > TALLY LIGHT and choose from a selection of options to enable this feature. **REC START/STOP Chime:** Press MENU/OK > SET UP > SOUND SETTING > REC START/STOP VOLUME to enable this feature.



## CHANGING EXPOSURE SETTINGS

Rotate the rear command dial to change the shutter speed. To change the aperture using the command dial, set the aperture ring on the lens to "C". To change ISO, rotate the front command dial. When the aperture ring is set to "C", click on the front command dial to toggle between aperture/ISO controls.



## IN-CAMERA RAW CONVERSION

To edit a RAW image in the camera, select it in the playback mode then press the "Q" button. Scroll and adjust settings including Film Simulation, Highlight tone, Sharpness and more. After making the adjustments, press the "Q" button to preview the image. Review the image on screen and press "OK" to save the file or "Back" to make additional adjustments.



## TETHERING WITH THE CAMERA

To set the camera for tethering, go to MENU > SET UP > NETWORK/USB SETTING > SELECT CONNECTION SETTING and select USB TETHER SHOOTING AUTO. The camera is now ready to be connected to a computer for tethering. Adobe Lightroom users can download the free "FUJIFILM Tethering Shooting Plug-in PRO for GFX". Capture One users do not require any Plug-in for tethering.



**GFX 100 II**  
**PERFORMANCE,**  
**MEET CREATIVITY**



## SPECIFICATIONS

**FUJIFILM**  
**X | GFX**

<b>Model Name</b>	FUJIFILM GFX100 II
<b>Number of effective pixels</b>	102 million pixels
<b>Image Sensor</b>	43.8mm×32.9mm GFX 102MP CMOS II HS with primary color filter
<b>Storage media</b>	SD Card (-2GB) / SDHC Card (-32GB) / SDXC Card (-2TB) / UHS-I / UHS-II / Video Speed Class V90 / CFexpress Type B Card (-2TB) / SSD (-2TB) *Please see the Fujifilm website ( <a href="https://fujifilm-x.com/support/compatibility/cameras/">https://fujifilm-x.com/support/compatibility/cameras/</a> ) to check memory card compatibility.
<b>File format of still image</b>	DCF Compliant with Design rule for Camera File system (DCF2.0) JPEG Exif Ver.2.32*1 HEIF 4:2:2 10bit RAW 14bit / 16bit RAW (RAF original format) TIFF 8bit / 16bit RGB (In-camera Raw Conversion Only)
<b>Lens mount</b>	FUJIFILM G Mount
<b>Sensitivity</b>	<b>Still Image</b> Standard Output: AUTO1 / AUTO2 / AUTO3 / ISO80 - 12800 (1/3 step) Extended Output: ISO40 / ISO25600 / ISO51200 / ISO102400 <b>Movie</b> Standard Output: AUTO / ISO100 - 12800 (1/3 step) Extended Output: ISO25600
<b>Exposure mode</b>	P (Program AE) / A (Aperture Priority AE) / S (Shutter Speed Priority AE) / M (Manual Exposure)
<b>Exposure compensation</b>	-5.0EV~+5.0EV 1/3EV step (Movie: -2.0EV~+2.0EV)
<b>Image stabilizer Mechanism Compensation Effect Digital Image Stabilization IS MODE BOOST</b>	Image sensor shift mechanism with 5-axis compensation 8.0 stops *based on CIPA standard *Pitch/yaw shake only *With GF63mmF2.8 R WR lens mounted Yes (movie mode only) Yes (movie mode only)
<b>Movie recording File Format File size Frame rate Recording time</b>	[8K(17:9)] 8192 x 4320□24p/23.98p□720Mbps/360Mbps/200Mbps/100Mbps/50Mbps [8K(16:9)] 7680 x 4320□29.97p/25p/24p/23.98p□720Mbps/360Mbps/200Mbps/100Mbps/50Mbps [8K(2.76:1)] 8192 x 2968□24p/23.98p□720Mbps/360Mbps/200Mbps/100Mbps/50Mbps [5.8K(2.35:1)] 5824 x 2476□29.97p/25p/24p/23.98p□720Mbps/360Mbps/200Mbps/100Mbps/50Mbps [5.4K(17:9)] 5440 x 2868□29.97p/25p/24p/23.98p□720Mbps/360Mbps/200Mbps/100Mbps/50Mbps [4.8K(3:2)] 4776 x 3184□24p/23.98p□720Mbps/360Mbps/200Mbps/100Mbps/50Mbps [4.8K(16:9)] 4776 x 2688□29.97p/25p/24p/23.98p□720Mbps/360Mbps/200Mbps/100Mbps/50Mbps [4.6K(1.38:1)] 4664 x 3380□24p/23.98p□720Mbps/360Mbps/200Mbps/100Mbps/50Mbps [DCI4K(17:9)] 4096 x 2160□59.94p/50p/29.97p/25p/24p/23.98p□720Mbps/360Mbps/200Mbps/100Mbps/50Mbps [4K(16:9)] 3840 x 2160□59.94p/50p/29.97p/25p/24p/23.98p□720Mbps/360Mbps/200Mbps/100Mbps/50Mbps [Full HD(17:9)] 2048 x 1080□59.94p/50p/29.97p/25p/24p/23.98p□720Mbps/360Mbps/200Mbps/100Mbps/50Mbps [Full HD(16:9)] 1920 x 1080□59.94p/50p/29.97p/25p/24p/23.98p□720Mbps/360Mbps/200Mbps/100Mbps/50Mbps [Full HD(17:9) High speed rec.] 2048 x 1080□120p/100p□720Mbps (recording)/360Mbps (recording)/200Mbps (recording) [Full HD(16:9) High speed rec.] 1920 x 1080□120p/100p□720Mbps (recording)/360Mbps (recording)/200Mbps (recording) *Selectable mode will be changed depending on the "Image Format" setting. *For recording movies, use a CFexpress Type B card or SD memory card with UHS Speed Class 3 or higher. *For recording movies in 360Mbps, use a CFexpress Type B card or SD memory card with Video Speed Class 60 or higher. *For recording movies in 720Mbps, use a CFexpress Type B card or SD memory card with Video Speed Class 90 or higher. *Selectable bitrate will be changed depends on the setting. *Apple ProRes codec can be only recorded to CFexpress Type B card *Bitrate for Apple ProRes codec is not selectable. *Recording time can become short depending on the temperature and/or shooting conditions
<b>LCD monitor</b>	3.2 inch Tilt-Type(Three Direction) Touch Screen Color LCD Monitor Aspect Ratio: 4:3 Dots: Approx. 2.36 million dots
<b>Viewfinder</b>	EVF: 0.64 inch OLED Color Viewfinder, Approx. 9.44 million dots Coverage of Viewing Area vs. Capturing Area: Approx. 100% Eyepoint: Approx. 21mm (from the Rear End of the Camera's Eyepiece) Diopter Adjustment: -5□+2m-1 Magnification: 1.00x with 50mm Lens (35mm Equivalent) at infinity and Diopter set to -1.0m-1 Diagonal Angle of View: approx. 47° (Horizontal angle of view: approx. 38° ) Built-In Eye Sensor
<b>Terminal Digital interface HDMI output LAN Terminal Other</b>	USB Type-C (USB3.2 Gen2x1) HDMI connector (Type A) 1000BASE-T, 100BASE-TX, 10BASE-T ø3.5mm, stereo mini connector (Microphone and Remote Release) ø3.5mm, stereo mini connector (Headphone), Hot shoe, Synchronized terminal
<b>Dimensions</b>	Width: 152.4mm, Height: 103.5mm, Depth: 73.5mm (Minimum Depth: 46.5mm)
<b>Weight</b>	Including battery and memory card: Approx. 948g (including EVF: 1,030g) Excluding battery and memory card: Approx. 867g (including EVF: 949g)
<b>Notes</b>	*1 Please see the Fujifilm website to check SD memory card compatibility. *2 Exif 2.3 is a digital camera file format that contains a variety of shooting information for optimal printing.

# FUJIFILM

---

## X | GFX



  [FUJIFILMX\\_CA](https://www.facebook.com/FUJIFILMX_CA)

VISIT [WWW.FUJIFILM-X.COM](http://WWW.FUJIFILM-X.COM) OR YOUR AUTHORIZED DEALER FOR MORE INFORMATION.

FUJIFILM and FUJINON are trademarks of FUJIFILM Corporation and its affiliates. © 2023 FUJIFILM North America Corporation and its affiliates. All rights reserved.