



X-TRANS
26.1 MEGA PIXEL
BSI CMOS 4 SENSOR

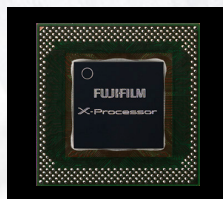
5TH GEN
X PROCESSOR 5
CPU

UP TO
7 STOPS
IBIS

SUPERIOR
6.2K VIDEO
OPEN GATE



© KDP Dinh



X-PROCESSOR 5

- Dedicated AI Processor
- 10-bit HEIF format
- Auto mode with Scene/Subject Detection
- 800² Frames Battery Life



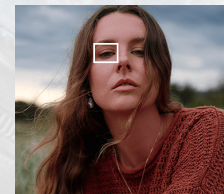
VLOG / AUTO Mode

- On-Screen touch controls
- Product Priority / Background Defocus
- UVC Webcam / Streaming in 4K/60P
- 19 Film Simulation modes including ETERNA



VARI-ANGLE TOUCH SCREEN LCD

- Large 3-inch, 3:2 ratio
- 1.84M-dot LCD monitor
- 4 customizable touch function (T-Fn)
- 2.36M-Dot Electronic Viewfinder



AI/DEEP LEARNING AUTOFOCUS

- Subject Detection AF (Animals, birds, cars, motorcycle, bicycles, airplanes and trains)
- 425 Phase detection AF Points
- Low-light Focusing down to -7EV ^{*1}



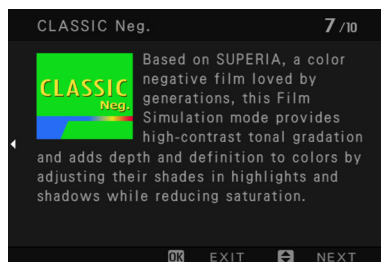
IN-BODY IMAGE STABILIZATION

- Up to 7 stops of stabilisation
- Works in combination with OIS
- IBIS Mode Boost
- Digital IS + IBIS/OIS available in video



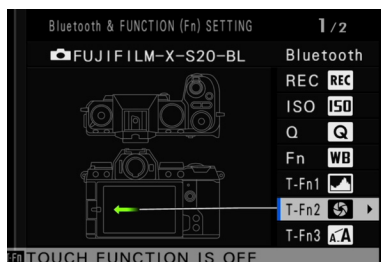
CINEMA QUALITY PERFORMANCE

- Open Gate 6.2K/30P 4:2:2 10-bit
- F-Log2 for 13+ Stops DR
- 4K/60P - 1080/240P High-speed Rec.
- ProRes RAW / Black Magic Raw (HDMI)



FILM SIMULATION SETTINGS

Use the Fn dial to quickly change the 19 FILM SIMULATION modes. The FN dial can also be used to change ISO. Press the Q button to navigate through the descriptions of the other FILM SIMULATION modes to find its unique characteristics. Rotate the Fn Dial to navigate through the descriptions of the various FILM SIMULATIONS to find the one that best suits the scene.



FUNCTION (FN) BUTTONS

To customize the Fn buttons, long press the DISP. BACK button. A diagram of the camera and the Fn buttons will appear. Select the Fn button you want to customize and scroll through the features to choose the function you want to assign.



WEBCAM / STREAMING 4K/60P

The camera can be used as a high quality webcam for video conferencing or streaming. Go to MENU > NETWORK / USB SETTING > SELECT CONNECTION SETTING and select USB WEBCAM. The camera will be detected as a webcam when connected to a computer as "X-S20". Set the resolution and frame rate in the MOVIE SETTING MENU > MOVIE MODE. You can also change the exposure settings and white balance in the IQ Menu.



PRODUCT PRIORITY MODE

Set the mode dial to the VLOG position. Tap the VLOG icon on the LCD to quickly access the VLOG options. Tap on the Product Priority mode icon to activate this feature. When the Product Priority mode is enabled, the focus naturally transitions from your face to the subject in front of you—it's like having a built-in assistant.



VIDEO RECORDING INDICATORS

REC FRAME INDICATOR: Press MENU/OK > Movie Setting > REC FRAME INDICATOR > ON to enable a RED frame around the LCD when video is being recorded. For High-Speed video, a BLUE frame will appear instead. **TALLY LIGHT:** Press MENU/OK > Movie Setting > TALLY LIGHT and choose from a selection of options to enable this feature. **REC START/STOP Chime:** Press MENU/OK > SET UP > SOUND SETTING > REC START/STOP VOLUME to enable this feature.

*1 When XF50mmF1.0 R WR is attached.

*2 Economy Mode

KIT OPTIONS



BODY ONLY
MSRP: \$1,749



XF15-45MMF3.5-5.6 OIS PZ
MSRP: \$1,899



XF18-55MMF2.8-4 R LM OIS
MSRP: \$2,299

COLOURS

■ BLACK

INCLUDED IN THE BOX

LI-ION BATTERY NP-W235, AC POWER ADAPTER AC-5VJ, PLUG ADAPTER, USB CABLE, SHOULDER STRAP, BODY CAP, COOLING FAN CONNECTOR COVER

ACCESSORIES



BC-W1235 BATTERY CHARGER
MSRP: \$100



STEREO MICROPHONE MIC-ST1
MSRP: \$150



LI-ION BATTERY NP-W235
MSRP: \$100



EF-60 FLASH & EF-W1 COMMANDER
MSRP: \$540 MSRP: \$270



TRIPOD GRIP TG-BT1
MSRP: \$270



COOLING FAN FAN-001
MSRP: \$260

SPECIFICATIONS

FUJIFILM
X | GFX

Model Name	FUJIFILM X-S20
Number of effective pixels	26.1 million pixels
Image Sensor	23.5mm×15.6mm (APS-C) X-Trans CMOS 4 with primary color filter.
Storage media	SD Card (-2GB) / SDHC Card (-32GB) / SDXC Card (-2TB) / UHS-I / UHS-II / Video Speed Class V90 <small>*Please see the Fujifilm website (https://fujifilm-x.com/support/compatibility/cameras/) to check memory card compatibility.</small>
File format of still image	DCF Compliant with Design rule for Camera File system (DCF2.0) JPEG Exif Ver.2.32*1 HEIF 4:2:2 10bit RAW 14bit RAW (RAF original format) TIFF 8bit / 16bit RGB (In-camera Raw Conversion Only)
Lens mount	FUJIFILM X Mount
Sensitivity Standard output Extended output	AUTO1 / AUTO2 / AUTO3 (up to ISO12800) / ISO160 to 12800(1/3 step) ISO80 / 100 / 125 / 25600 / 51200
Exposure control	TTL 256-zone metering, Multi / Spot / Average / Center Weighted
Exposure mode	P (Program AE) / A (Aperture Priority AE) / S (Shutter Speed Priority AE) / M (Manual Exposure)
Exposure compensation	-5.0EV→+5.0EV 1/3EV step (Movie: -2.0EV→+2.0EV)
Image stabilizer Mechanism Compensation Effect Digital Image Stabilization IS MODE BOOST	Image sensor shift mechanism with 5-axis compensation Maximum 7 stops (based on CIPA standard. Pitch/yaw shake only). Yes (movie mode only) Yes (movie mode only)
Shutter type	Focal Plane Shutter
Movie recording File Format File size Frame rate Recording time	MOV (MPEG-4 AVC/H.264, Audio: Linear PCM / Stereo sound 24bit / 48KHz sampling) / MP4 (MPEG-4 AVC/H.264, Audio: AAC) / Long-GOP [6.2K(3:2)] 6240 × 4160 29.97p/25p/24p/23.98p 360Mbps/200Mbps/100Mbps/50Mbps [DCI4K(17:9)] 4096 × 2160 59.94p/50p/29.97p/25p/24p/23.98p 360Mbps/200Mbps/100Mbps/50Mbps [4K(16:9)] 3840 × 2160 59.94p/50p/29.97p/25p/24p/23.98p 360Mbps/200Mbps/100Mbps/50Mbps [Full HD(17:9)] 2048 × 1080 59.94p/50p/29.97p/25p/24p/23.98p 360Mbps/200Mbps/100Mbps/50Mbps [Full HD(16:9)] 1920 × 1080 59.94p/50p/29.97p/25p/24p/23.98p 360Mbps/200Mbps/100Mbps/50Mbps [Full HD LP(17:9)] 2048 × 1080 (1.29x Crop) 59.94p/50p 360Mbps/200Mbps/100Mbps/50Mbps [Full HDLP (16:9)] 1920 × 1080 (1.29x Crop) 59.94p/50p 360Mbps/200Mbps/100Mbps/50Mbps [Full HD(17:9) High speed rec.] 2048 × 1080 240p/200p/120p/100p 360Mbps (recording)/200Mbps(recording) [Full HD(16:9) High speed rec.] 1920 × 1080 240p/200p/120p/100p 360Mbps(recording)/200Mbps(recording) <small>*For recording movies, use SD memory card with UHS Speed Class 3 or higher. *For recording movies in 360Mbps, use a SD memory card with Video Speed Class 60 or higher. *Selectable bitrate will be changed depends on the setting. *Recording time can become short depending on the temperature and/or shooting conditions</small>
Flash modes Sync. mode Flash mode	1ST CURTAIN / 2ND CURTAIN / AUTO FP(HSS) (excl. EF-X8) TTL (TTL AUTO (P mode) / STANDARD / SLOW SYNC.) / MANUAL / COMMANDER / OFF (When EF-X8 is set) TTL (TTL AUTO (P mode) / STANDARD / SLOW SYNC.) / MANUAL / MULTI / OFF (When SHOE MOUNT FLASH is set)
LCD monitor	3.0 inch vari-angle Touch Screen Color LCD Monitor / Aspect Ratio: 3:2 / Dots: Approx. 1.84 million dots
Viewfinder	EVF: 0.39 inch OLED Color Viewfinder, Approx. 2.36 million dots Coverage of Viewing Area Vs. Capturing Area: Approx. 100% Eyepoint: Approx. 17.5mm (from the Rear End of the Camera's Eyepiece) Diopter Adjustment: -4→+2m Magnification: 0.62x with 50mm Lens (35mm Equivalent) at infinity and Diopter set to -1.0m Diagonal Angle of View: approx. 31° (Horizontal angle of view: approx. 26°) Built-In Eye Sensor
Terminal Digital interface HDMI output Other	USB Type-C (USB3.2 Gen2x1) HDMI Micro connector (Type D) 3.5mm stereo mini connector (Microphone), 3.5mm stereo mini connector (Headphone), Hot shoe
Dimensions	(W) 126.0mm × (H) 85.1mm × (D) 65.4mm (minimum depth 32.9mm)
Weight	Including battery and memory card: Approx. 491g Excluding battery and memory card: Approx. 410g
Notes	*1 Please see the Fujifilm website to check SD memory card compatibility. *2 Exif 2.3 is a digital camera file format that contains a variety of shooting information for optimal printing.