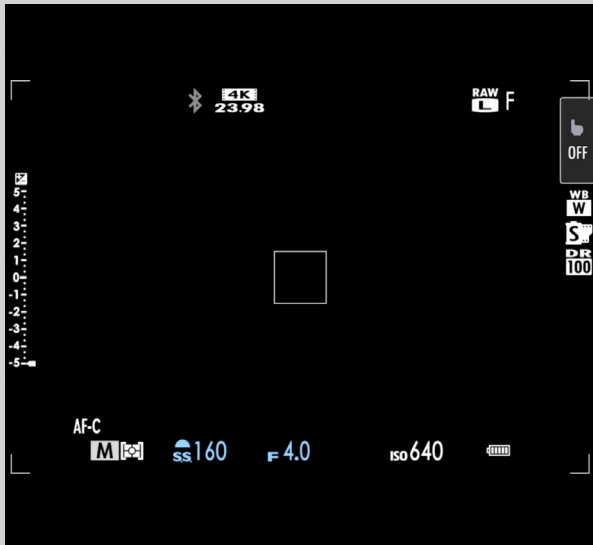




## 5<sup>th</sup> Generation A U T O F O C U S C H E A T S H E E T

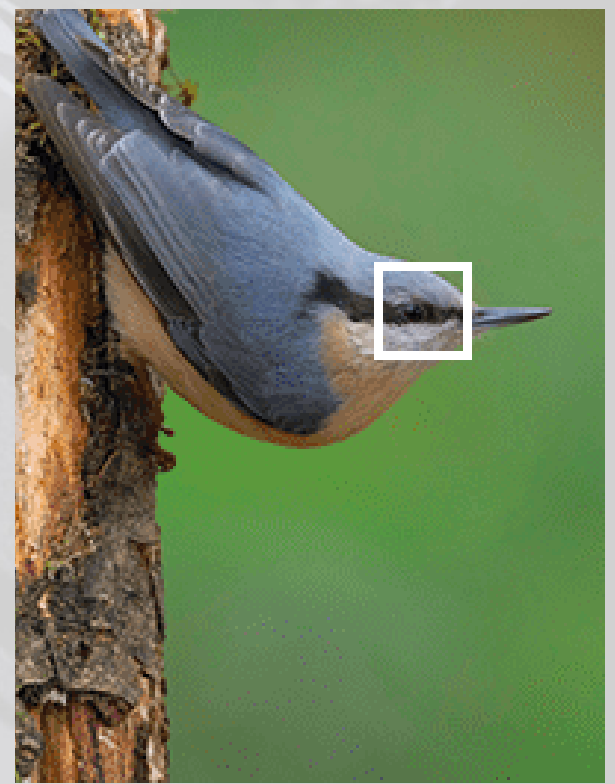


### USING CONTINUOUS AF (AF-C)

When using AF-C, we recommend setting the AF Mode to “WIDE/TRACKING”. Position the AF box over the subject and it will be tracked within the frame while the shutter is half-pressed. You can fine tune the camera's tracking using the AF-C Custom Settings. Navigate to Menu > AF/MF SETTING > AF-C CUSTOM SETTING.

### USING SUBJECT DETECTION

Ensure the camera is set to AF-C. The “WIDE/TRACKING” AF Mode is recommended when using this feature. In the AF/MF SETTING menu, navigate to SUBJECT DETECTION SETTING -> SUBJECT DETECTION ON and select from the list of available subjects. When a subject moves into the frame, it will now be detected. Half-press the shutter button to continue tracking the subject and fully depress the button to capture the image.



### USING FACE/EYE DETECTION

Navigate to MENU > AF/MF SETTING > FACE/EYE DETECTION SETTING to enable this feature. Options are OFF, AUTO, RIGHT EYE or LEFT EYE PRIORITY. When more than one person is in the frame, the camera will select the subject that is closest to the AF box.

### USING BACK-BUTTON FOCUSING

Use the AF-ON button in combination with the Shutter Release button can be useful when photographing fast moving subjects. The camera has a dedicated AF-ON button. To set it up for traditional back button focusing, you will need to disable the SHUTTER AF. Press MENU > SET UP > BUTTON/DIAL SETTING > SHUTTER AF in order to disable this function. The AF-C setting should generally be set to “OFF” for back button focusing.



# FUJIFILM

---

## X | GFX



📷 📘 FUJIFILMX\_CA

VISIT [WWW.FUJIFILM-X.COM](http://WWW.FUJIFILM-X.COM) OR YOUR AUTHORIZED DEALER FOR MORE INFORMATION.

FUJIFILM and FUJINON are trademarks of FUJIFILM Corporation and its affiliates. © 2023 FUJIFILM North America Corporation and its affiliates. All rights reserved.