

FUJIFILM

X | GFX



X-T5
PHOTOGRAPHY
FIRST



X-T5
PHOTOGRAPHY
FIRST



X-TRANS 5 HR
40.2 MEGA PIXEL
BSI CMOS SENSOR

6.2K/30P
10-BIT 4:2:2
INTERNAL RECORDING

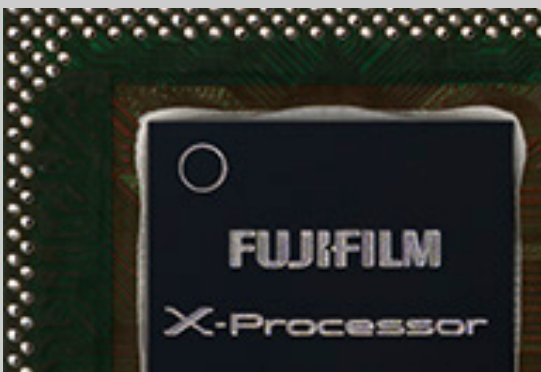
UP TO
7-STOPS
IMAGE STABILIZATION

PIXEL SHIFT
160MP
MULTI SHOT



40.2MP X-TRANS CMOS 5 HR

- Back-Illuminated APS-C Sensor
- 1/180,000s Electronic Shutter
- ISO125 Standard Sensitivity
- Image Ratio 3:2, 4:3, 5:4, 1:1, 16:9



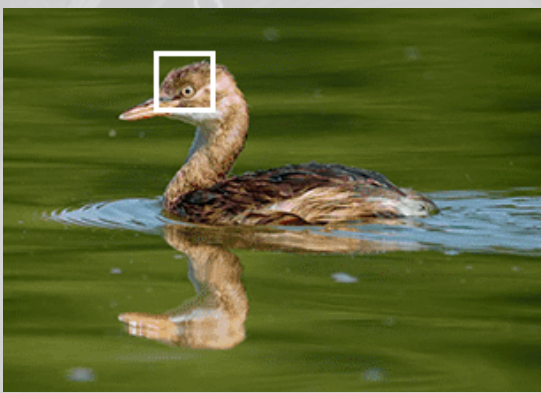
X-PROCESSOR 5 IMAGING ENGINE

- AI Processing Technology
- Reduced Power Consumption
- 10-bit HEIF format
- 20FPS Blackout-Free Burst Shooting (ES)



WEATHER RESISTANT BODY

- Up to 7 stops In-Body-Image-Stabilisation
- NP-W235 Battery up to 740 Shots ^{*2}
- 15FPS Mechanical Shutter
- Shutter Withstanding 500k Actuation



AI/DEEP LEARNING TECHNOLOGY

- Subject Detection AF
- 425 Phase Detection AF Points
- AI AWB / Deep Learning
- Low-light focusing down to -7EV^{*1}



160MP PIXEL SHIFT MULTI-SHOT

- 4K/60P Webcam Mode
- 19 Film Simulation incl. Classic Neg.
- In-Camera Focus Bracketing
- 1.4 / 2.0x Digital Tele-Converter



6.2K/30P 4:2:2 10-BIT

- 6.2K/30P, 4K/60P, 1080/240P
- F-Log2 for 13+ Stops DR
- 12-bit ProRes / Black Magic Raw (HDMI Out)
- Video Self-Timer / Rec Frame Indicator

*1 When XF50mmF1.0 R WR is attached.

*2 In Economy Mode



X-T5
PHOTOGRAPHY
FIRST



KIT OPTIONS



BODY ONLY
MSRP: \$2,299



WITH XF18-55MMF2.8-4 R LM OIS WR
MSRP: \$2,839



WITH XF16-80MMF4 R LM OIS WR
MSRP: \$2,969

COLOURS



BLACK

SILVER

INCLUDED IN THE BOX

LI-ION BATTERY NP-W235, AC POWER ADAPTER AC-5VJ, PLUG ADAPTER, USB CABLE, HEADPHONE ADAPTER, SHOULDER STRAP, BODY CAP, HOT SHOE COVER, SYNC TERMINAL COVER, OWNER'S MANUAL

ACCESSORIES



LI-ION BATTERY NP-W235
MSRP: \$100



DUAL BATTERY CHARGER BC-W235
MSRP: \$100



METAL HAND GRIP MHG-XT5
MSRP: \$179



M-MOUNT ADAPTER
MSRP: \$299



EF-60 FLASH & EF-W1 COMMANDER
MSRP: \$539 MSRP: \$269



MCEX-11 & MCEX-16 EXTENSION TUBES
MSRP: \$129 MSRP: \$129

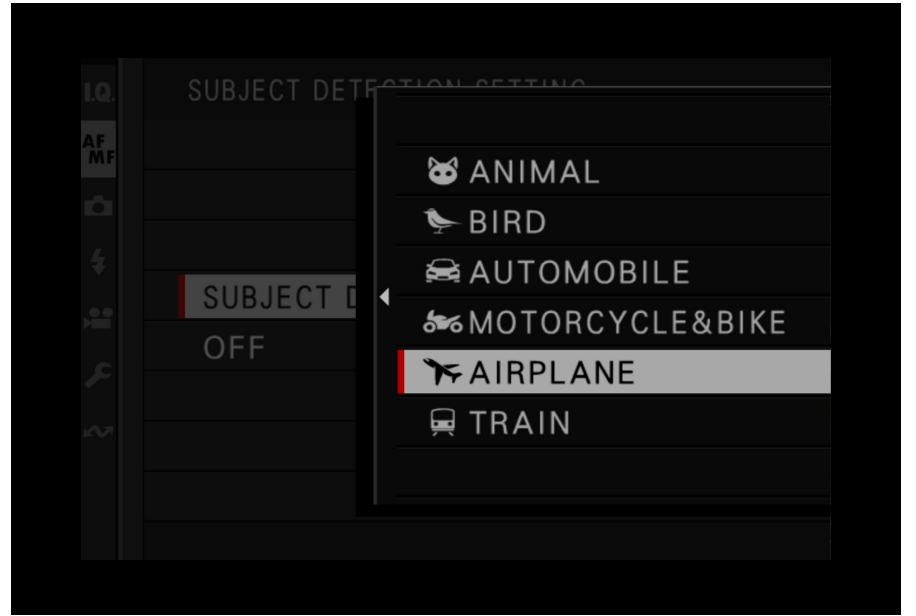


X-T5
PHOTOGRAPHY
FIRST



CHANGING EXPOSURE SETTINGS

To change the exposure settings, use the dedicated dials and aperture ring. To use the front/rear command dials instead, set the shutter speed dial to T, the ISO dial to C and the aperture ring to A. You need to change the behaviour of the A position on the aperture ring from AUTO to COMMAND. Go to the BUTTON/DIAL SETTING and set the APERTURE RING SETTING (A) to COMMAND.



SUBJECT DETECTION AUTOFOCUS

The camera is able to detect and track a broader range of subjects, including animals, birds, cars, motorcycles, bicycles, airplanes, and trains – as well as human faces and eyes. Set the camera to AF-C and then go to MENU > AF/MF SETTING > SUBJECT DETECTION SETTING and select the desired subject tracking option. The camera is all set to start tracking the subject selected. Half press the shutter button to start focusing and fully press to take the shot. You can also enable PRE-AF in the menu to allow the camera to track without half-pressing the shutter button.



GEOTAGGING

Choose whether location data downloaded from a smartphone are embedded in pictures as they are taken. Follow the instructions to connect the camera to the FUJIFILM remote app. On the camera, go to NETWORK/USB SETTING > Bluetooth/SMARTPHONE SETTING > SMARTPHONE LOCATION SYNC. > ON. The camera will use your smartphone's location to tag your images.



BACK BUTTON FOCUSING

The camera has a dedicated AF-ON button. To set it up for traditional back button focusing, you will need to disable the SHUTTER AF. Press MENU > SET UP > BUTTON/DIAL SETTING > SHUTTER AF in order to disable this function. The AF-C setting should generally be set to "OFF" for back button focusing.



X-T5
PHOTOGRAPHY
FIRST

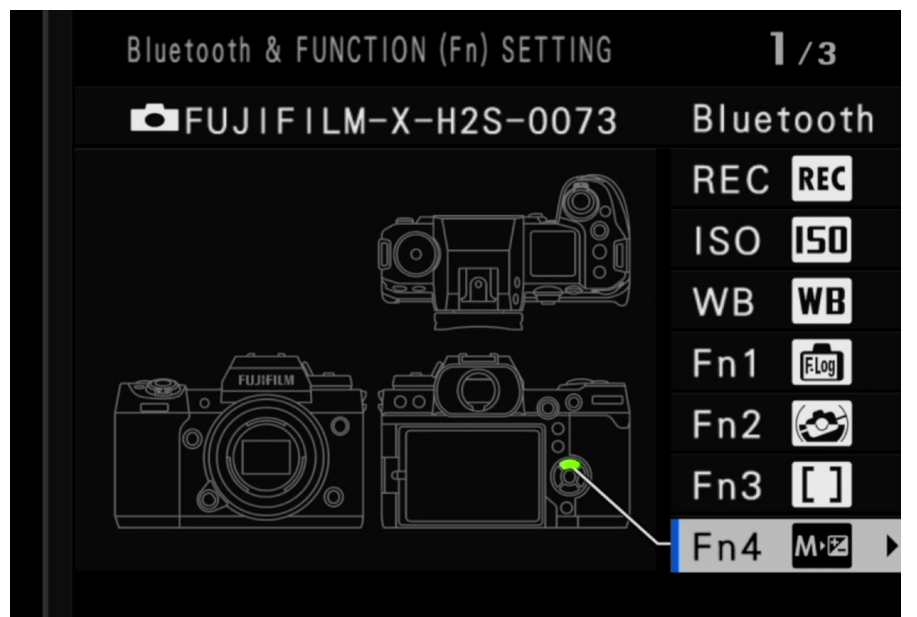
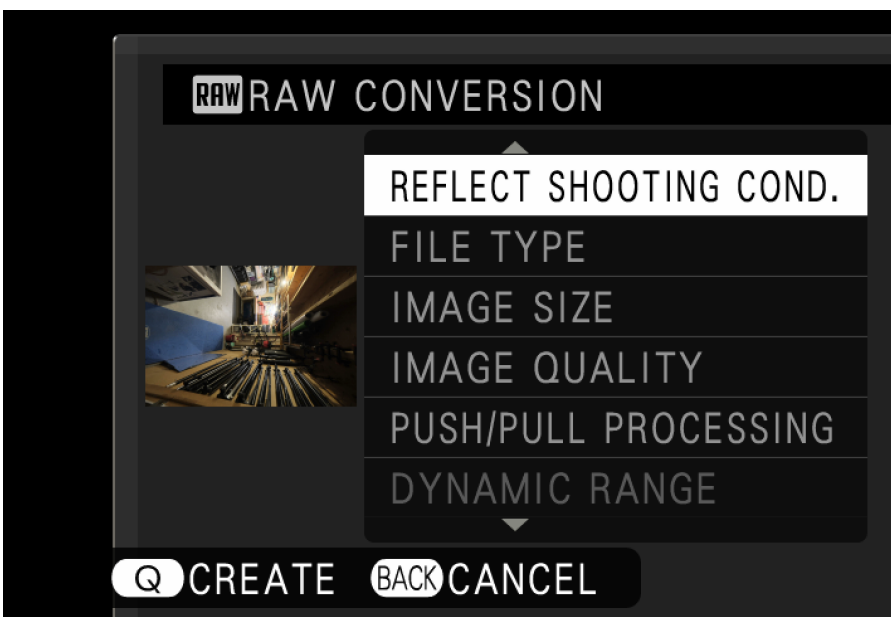


SETTING UP FACE/EYE DETECTION

Intelligent Face Detection sets focus and exposure for human faces anywhere in the frame, preventing the camera from focusing on the background in portraits. You can also choose whether the camera detects and focuses on either the left or right eye. Go to MENU > AF/MF SETUP > FACE / EYE DETECTION SETTING to select your desired settings.

4K/60P WEBCAM MODE

The camera can be used as a high quality webcam for video conferencing or streaming. Go to MENU > NETWORK / USB SETTING > SELECT CONNECTION SETTING and select USB WEBCAM. The camera will be detected as a webcam when connected to a computer as "X-T5". Set the resolution and frame rate in the MOVIE SETTING MENU > MOVIE MODE. You can also change the white balance in the IQ Menu.



IN-CAMERA RAW CONVERSION

To edit a RAW image in the camera, select it in the playback mode then press the "Q" button. Scroll and adjust settings including: Film Simulation, Highlight tone, Sharpness and more. After making the adjustments, press the "Q" button to preview the image. Review the image on screen and press "OK" to save the file or "Back" to make additional adjustments.

FUNCTION (FN) BUTTONS

To customize your Fn buttons, long press the DISP. BACK button. A diagram of the camera and the Fn buttons will appear. Select the Fn button you want to customize and scroll through the features to choose the function you want to assign.



X-T5
PHOTOGRAPHY
FIRST



SPECIFICATIONS

FUJIFILM
X | GFX

Model Name	FUJIFILM X-T5
Number of effective pixels	40.2 million pixels
Image Sensor	23.5mm x 15.6mm (APS-C) X-Trans CMOS 5 HR with primary color filter
Storage media	SD Card (-2GB) / SDHC Card (-32GB) / SDXC Card (-2TB) / UHS-I / UHS-II / Video Speed Class V90 *Please check Compatibility for more detail.
File format of still image	DCF Compliant with Design rule for Camera File system (DCF2.0) JPEG Exif Ver.2.32*1 HEIF 4:2:2 10bit RAW 14bit RAW (RAF original format) TIFF 8bit / 16bit RGB (In-camera Raw Conversion Only)
Lens mount	FUJIFILM X Mount
Sensitivity Standard output Extended output	Still Image Standard Output: AUTO1 / AUTO2 / AUTO3 / ISO125-12800 (1/3 step) Extended Output: ISO64 / ISO80 / ISO100 / ISO25600 / ISO51200 Movie Standard Output: AUTO / ISO125-12800 (1/3 step) Extended Output: ISO25600
Exposure control	TTL 256-zone metering, Multi / Spot / Average / Center Weighted
Exposure mode	P (Program AE) / A (Aperture Priority AE) / S (Shutter Speed Priority AE) / M (Manual Exposure)
Image stabilizer	Mechanism Image sensor shift mechanism with 5-axis compensation Compensation Effect 7.0 stops *based on CIPA standard *Pitch/yaw shake only *With XF35mmF1.4 R lens mounted Digital Image Stabilization Yes (movie mode only) IS MODE BOOST Yes (movie mode only)
Shutter type	Focal Plane Shutter
Movie recording File Format Recording time	[6.2K(16:9)] 6240 x 3510□29.97p/25p/24p/23.98p□360Mbps/200Mbps/100Mbps/50Mbps [DCI4K HQ(17:9)] 4096 x 2160□29.97p/25p/24p/23.98p□360Mbps/200Mbps/100Mbps/50Mbps [4K HQ(16:9)] 3840 x 2160□29.97p/25p/24p/23.98p□360Mbps/200Mbps/100Mbps/50Mbps [DCI4K(17:9)] 4096 x 2160□59.94p/50p/29.97p/25p/24p/23.98p□360Mbps/200Mbps/100Mbps/50Mbps [4K(16:9)] 3840 x 2160□59.94p/50p/29.97p/25p/24p/23.98p□360Mbps/200Mbps/100Mbps/50Mbps [Full HD(17:9)] 2048 x 1080□59.94p/50p/29.97p/25p/24p/23.98p□360Mbps/200Mbps/100Mbps/50Mbps [Full HD(16:9)] 1920 x 1080□59.94p/50p/29.97p/25p/24p/23.98p□360Mbps/200Mbps/100Mbps/50Mbps [Full HD(17:9) High speed rec.] 2048 x 1080 □240p/200p/120p/100p□360Mbps(recording)/200Mbps(recording) [Full HD(16:9) High speed rec.] 1920 x 1080 □240p/200p/120p/100p□360Mbps(recording)/200Mbps(recording) *For recording movies, use a SD memory card with UHS Speed Class 3 or higher. *For recording movies in 360Mbps, use a SD memory card with Video Speed Class 60 or higher. *Selectable bitrate will be changed depends on the setting. *Recording time can become short depending on the temperature and/or shooting conditions
LCD monitor	3.0 inch Tilt-Type(Three Direction) Touch Screen Color LCD Monitor Aspect Ratio: 3:2 Dots: Approx. 1.84 million dots
Viewfinder	EVF: 0.5 inch OLED Color Viewfinder, Approx. 3.69 million dots Coverage of Viewing Area vs. Capturing Area: Approx. 100% Eyepoint: Approx. 24mm (from the Rear End of the Camera's Eyepiece) Diopter Adjustment: -5 - +3m-1 Magnification: 0.80x with 50mm Lens (35mm Equivalent) at infinity and Diopter set to -1.0m-1 Diagonal Angle of View: approx. 39° (Horizontal angle of view: approx. 32°) Built-In Eye Sensor
Terminal Digital interface HDMI output Other	USB Type-C (USB3.2 Gen2x1) HDMI connector (Type D) ø3.5mm, stereo mini connector (Microphone) ø2.5mm, Remote Release Connector Hot shoe Synchronized terminal
Dimensions	Width: 129.5mm Height: 91mm Depth: 63.8mm (Minimum Depth: 37.9mm)
Weight	Including battery and memory card: Approx. 557g Excluding battery and memory card: Approx. 476g
Notes	*1 Please see the Fujifilm website to check SD memory card compatibility. *2 Exif 2.3 is a digital camera file format that contains a variety of shooting information for optimal printing.

FUJIFILM

X | GFX



📷 📘 FUJIFILM_NORTHAMERICA

VISIT WWW.FUJIFILM-X.COM OR YOUR AUTHORIZED DEALER FOR MORE INFORMATION.

FUJIFILM and FUJINON are trademarks of FUJIFILM Corporation and its affiliates. © 2022 FUJIFILM North America Corporation and its affiliates. All rights reserved.