

FUJIFILM  
X | GFX



X-H2  
LIFE IN  
DETAILS



**X-H2**  
L I F E I N  
D E T A I L S



X-TRANS 5 HR  
**40.2 MEGAPIXEL**  
BSI CMOS SENSOR

8K/30P 10-BIT 4:2:2  
**APPLE PRORES**  
PRORES HQ, PRORES LT

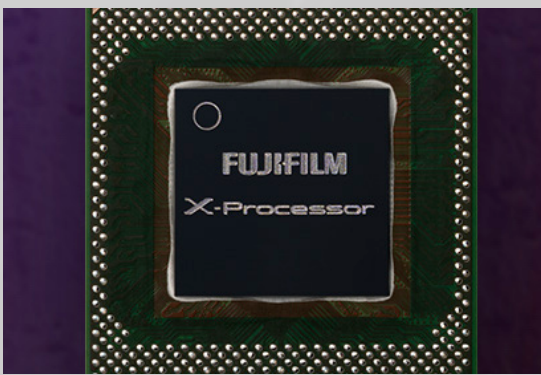
UP TO  
**7-STOPS**  
IMAGE STABILIZATION

PIXEL SHIFT  
**160MP**  
MULTI SHOT



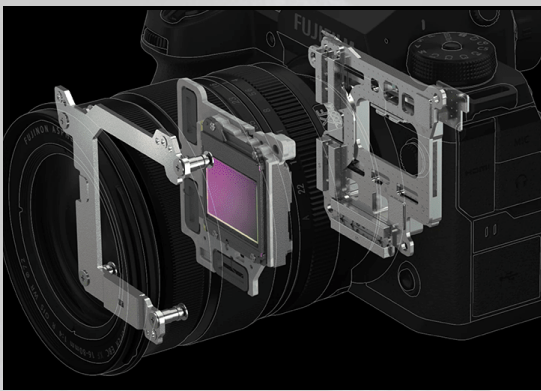
### 40.2MP X-TRANS CMOS 5 HR

- Back-Illuminated APS-C Sensor
- 1/180,000s Electronic Shutter
- ISO125 Standard Sensitivity
- Image Ratio 3:2, 4:3, 5:4, 1:1, 16:9



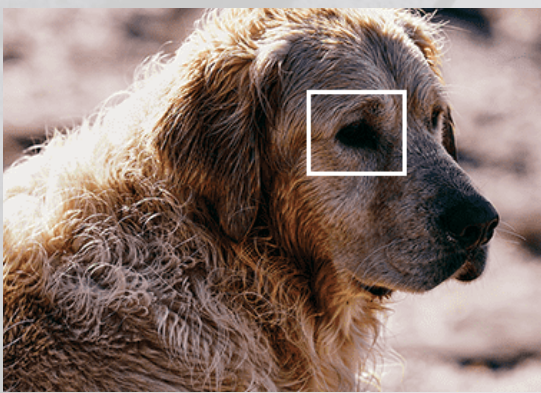
### X-PROCESSOR 5 IMAGING ENGINE

- 20fps Blackout-Free Burst Shooting (ES)
- Dedicated AI Processor
- Internal Apple ProRes Formats
- 10-Bit HEIF format



### UP TO 7-STOPS IMAGE STABILIZATION

- Highly Robust Magnesium Body
- 79 Weather-Sealed Points
- Feather-Touch Shutter Release
- Shutter Withstanding 500k Actuation



### AI/DEEP LEARNING TECHNOLOGY

- Subject Detection AF
- 425 Phase Detection AF Points
- 5.76M-Dot OLED EVF, 120fps, 0.8x Mag.
- Low-light focusing down to -7EV\*<sup>1</sup>



### 160MP PIXEL SHIFT MULTI-SHOT

- 4K/60P Webcam Mode
- 19 Film Simulation incl. Classic Neg.
- In-Camera Focus Bracketing
- 2.0x Digital Tele-Converter



### 8K/30P 4:2:2 10-BIT

- 6.2K/30P, 4K/60P, 1080/240P
- F-Log2 for 13+ Stops DR
- ProRes / Black Magic Raw (HDMI Out)
- 2x Digital Zoom with 4K HQ Video

\*1 When XF50mmF1.0 R WR is attached.



**X-H2**  
L I F E I N  
D E T A I L S



## KIT OPTIONS



BODY ONLY  
MSRP: \$2550



WITH XF16-80MMF4 R LM OIS WR  
MSRP: \$3200

## INCLUDED IN THE BOX

LI-ION BATTERY NP-W235S, AC POWER ADAPTER AC-5VJ, PLUG ADAPTER, USB CABLE, SHOULDER STRAP, BODY CAP, HOT SHOE COVER, FILE TRANSMITTER/VERTICAL BATTERY GRIP CONNECTOR COVER, MEMORY CARD SLOT COVER, SYNC TERMINAL COVER, COOLING FAN CONNECTOR COVER, CABLE PROTECTOR, OWNER'S MANUAL

## ACCESSORIES



LI-ION BATTERY NP-W235  
MSRP: \$100



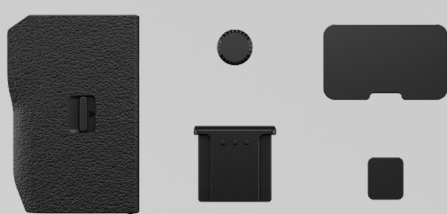
DUAL BATTERY CHARGER BC-W235  
MSRP: \$100



VERTICAL BATTERY GRIP VG-XH  
MSRP: \$515



FILE TRANSMITTER FT-XH  
MSRP: \$1280



CVR-XH2 COVER KIT  
MSRP: \$26



COOLING FAN FAN-001  
MSRP: \$260

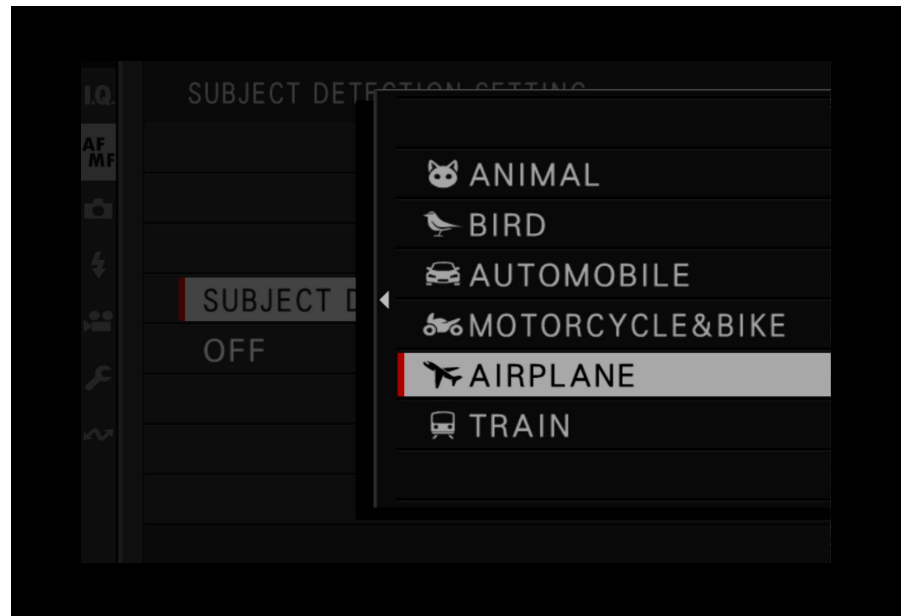


**X-H2**  
L I F E I N  
D E T A I L S



## 7 CUSTOM POSITIONS

Set the mode dial to one of the 7 custom setting positions (C1-C7) which can be assigned to frequently used settings including exposure and focusing options. They can also be set to either the photo or video mode. Adjustments made in the camera's menu will automatically be stored; select DISABLE in the AUTO UPDATE SETTING menu if you prefer not to have changes saved automatically.



## SUBJECT DETECTION AUTOFOCUS

The camera is able to detect and track a broader range of subjects, including animals, birds, cars, motorcycles, bicycles, airplanes, and trains – as well as human faces and eyes. Set the camera to AF-C and then go to MENU > AF/MF SETTING > SUBJECT DETECTION SETTING and select the desired subject tracking option. The camera is all set to start tracking the subject selected. Half press the shutter button to start focusing and fully press to take the shot. You can also enable PRE-AF in the menu to allow the camera to track without half-pressing the shutter button.



## SUB MONITOR CUSTOMIZATION

Go to MENU > SET UP > SCREEN SET-UP > SUB MONITOR SETTING and choose whether you want to change the STILL MODE or the MOVIE MODE options. Select INFORMATION and scroll to the section of the screen you want to change and press OK and select the settings you want to assign to the section.

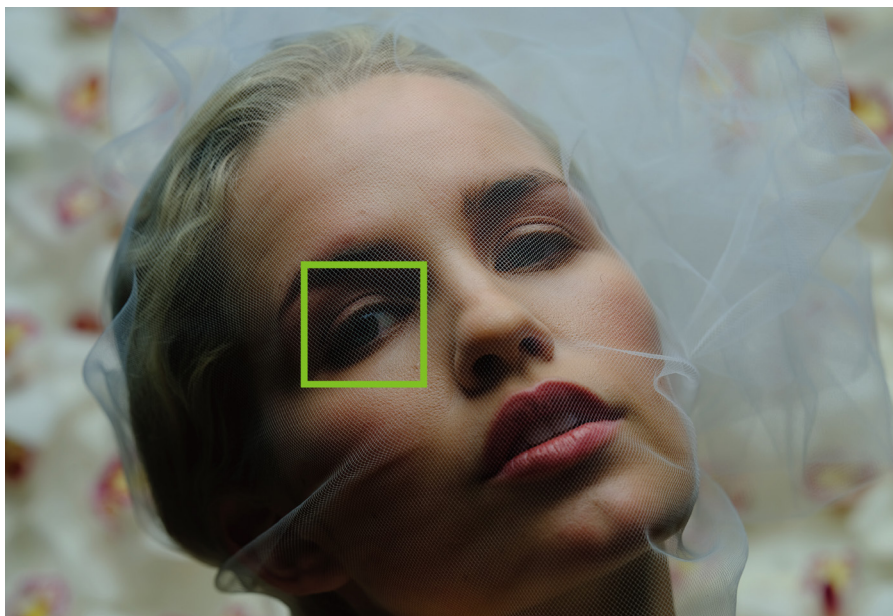


## FORMAT MEMORY CARD

The X-H2 features two card slots – one CFexpress™ Type B and one UHS-II SD. To quickly format your memory card, press and hold the DRIVE and the DOWN D-Pad button at the same time to bring up the format screen. Select the card slot you want to format and press the MENU / OK button to proceed. You can also access the FORMAT menu in the SETUP > USER SETTING > FORMAT.



**X-H2**  
L I F E I N  
D E T A I L S

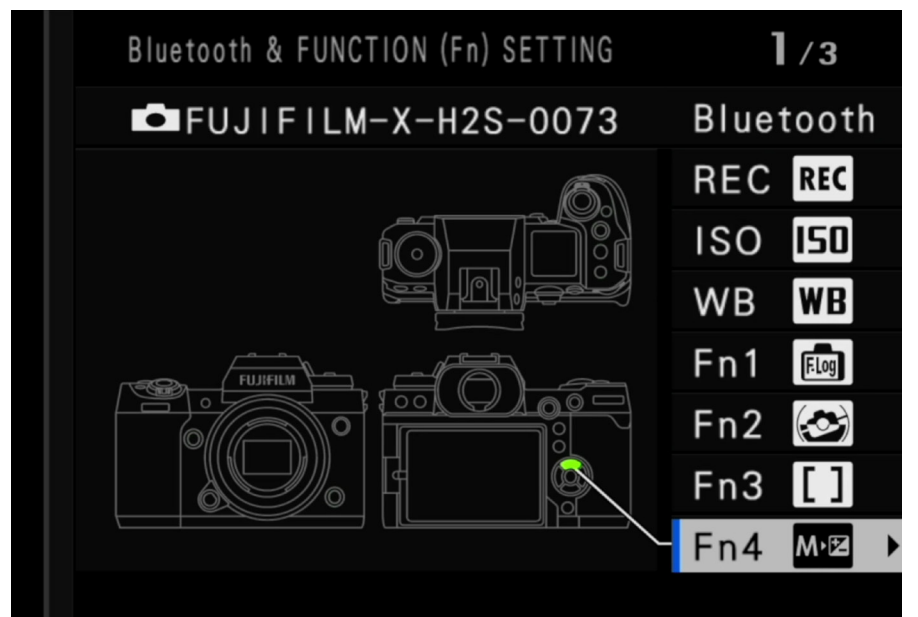
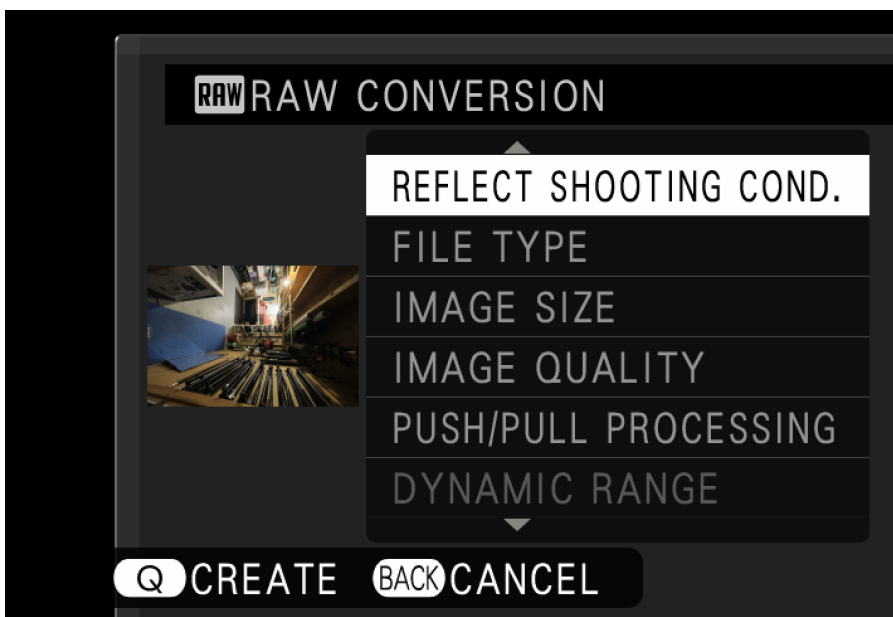


## SETTING UP FACE/EYE DETECTION

Intelligent Face Detection sets focus and exposure for human faces anywhere in the frame, preventing the camera from focusing on the background in portraits. You can also choose whether the camera detects and focuses on either the left or right eye. Go to MENU > AF/MF SETUP > FACE / EYE DETECTION SETTING to select your desired settings.

## 4K/60P WEBCAM MODE

The camera can be used as a high quality webcam for video conferencing or streaming. Go to MENU > NETWORK / USB SETTING > SELECT CONNECTION SETTING and select USB WEBCAM. The camera will be detected as a webcam when connected to a computer as "X-H2S". Set the resolution and frame rate in the MOVIE SETTING MENU > MOVIE MODE. You can also change the white balance in the IQ Menu.



## IN-CAMERA RAW CONVERSION

To edit a RAW image in the camera, select it in the playback mode then press the "Q" button. Scroll and adjust settings including: Film Simulation, Highlight tone, Sharpness and more. After making the adjustments, press the "Q" button to preview the image. Review the image on screen and press "OK" to save the file or "Back" to make additional adjustments.

## FUNCTION (FN) BUTTONS

To customize your Fn buttons, long press the DISP. BACK button. A diagram of the camera and the Fn buttons will appear. Select the Fn button you want to customize and scroll through the features to choose the function you want to assign.



**X-H2**  
L I F E I N  
D E T A I L S




## SPECIFICATIONS

**FUJIFILM**  
X | GFX

<b>Model Name</b>	FUJIFILM X-H2
<b>Number of effective pixels</b>	40.2 million pixels
<b>Image Sensor</b>	23.5mm x 15.6mm (APS-C) X-Trans CMOS 5 HR with primary color filter
<b>Storage media</b>	SD Card (-2GB) / SDHC Card (-32GB) / SDXC Card (-2TB) / UHS-I / UHS-II / Video Speed Class V90 / CFexpress Type B Card (-2TB) *Please check <a href="#">Compatibility</a> for more detail. *Please check <a href="#">the list of the operation confirmed CFexpress Type B Card</a>
<b>File format of still image</b>	DCF Compliant with Design rule for Camera File system (DCF2.0) JPEG Exif Ver.2.32*1 HEIF 4:2:2 10bit RAW 14bit RAW (RAF original format) TIFF 8bit / 16bit RGB (In-camera Raw Conversion Only)
<b>Lens mount</b>	FUJIFILM X Mount
<b>Sensitivity Standard output Extended output</b>	Still Image Standard Output: AUTO1 / AUTO2 / AUTO3 / ISO125-12800 (1/3 step) Extended Output: ISO64 / ISO80 / ISO100 / ISO25600 / ISO51200 Movie Standard Output: AUTO / ISO125-12800 (1/3 step) Extended Output: ISO25600
<b>Exposure control</b>	TTL 256-zone metering, Multi / Spot / Average / Center Weighted
<b>Exposure mode</b>	P (Program AE) / A (Aperture Priority AE) / S (Shutter Speed Priority AE) / M (Manual Exposure)
<b>Image stabilizer</b>	Mechanism Image sensor shift mechanism with 5-axis compensation Compensation Effect 7.0 stops *based on CIPA standard *Pitch/yaw shake only *With XF35mmF1.4 R lens mounted Digital Image Stabilization Yes (movie mode only) IS MODE BOOST Yes (movie mode only)
<b>Shutter type</b>	Focal Plane Shutter
<b>Movie recording File Format Recording time</b>	8K / 6.2K / DCI 4K / 4K / FULL HD MOV: Apple ProRes 422 HQ, Linear PCM (Stereo sound 24bit / 48KHz sampling) Apple ProRes 422, Linear PCM (Stereo sound 24bit / 48KHz sampling) Apple ProRes 422 LT, Linear PCM (Stereo sound 24bit / 48KHz sampling) HEVC/H.265, Linear PCM (Stereo sound 24bit / 48KHz sampling) MPEG-4 AVC/H.264, Linear PCM (Stereo sound 24bit / 48KHz sampling) MP4: MPEG-4 AVC/H.264, AAC Movie compression All Intra / Long GOP Recording time can become short depending on the temperature and/or shooting conditions *See full spec sheet for all resolution / Bitrate available.
<b>LCD monitor</b>	3.0 inch vari-angle Touch Screen Color LCD Monitor Aspect Ratio: 3:2 Dots: Approx. 1.62 million dots
<b>Viewfinder</b>	EVF: 0.5 inch OLED Color Viewfinder, Approx. 5.76 million dots Coverage of Viewing Area vs. Capturing Area: Approx. 100% Eyepoint: Approx. 24mm (from the Rear End of the Camera's Eyepiece) Diopter Adjustment: -5 - +3m-1 Magnification: 0.80x with 50mm Lens (35mm Equivalent) at infinity and Diopter set to -1.0m-1 Diagonal Angle of View: approx. 40° (Horizontal angle of view: approx. 32° ) Built-In Eye Sensor
<b>Terminal Digital interface HDMI output Other</b>	USB Type-C (USB3.2 Gen2x1) HDMI connector (Type A) ø3.5mm, stereo mini connector (Microphone) ø3.5mm, stereo mini connector (Headphone) ø2.5mm, Remote Release Connector Hot shoe Synchronized terminal
<b>Dimensions</b>	Width: 136.3mm Height: 92.9mm Depth: 84.6mm (Minimum Depth) 42.8mm
<b>Weight</b>	including battery and memory card: Approx. 660g excluding battery and memory card: Approx. 579g
<b>Notes</b>	*1 Please see the Fujifilm website to check SD memory card compatibility. *2 Exif 2.3 is a digital camera file format that contains a variety of shooting information for optimal printing.

FUJIFILM  
X | GFX



  FUJIFILM\_NORTHAMERICA

VISIT [WWW.FUJIFILM-X.COM](http://WWW.FUJIFILM-X.COM) OR YOUR AUTHORIZED DEALER FOR MORE INFORMATION.

FUJIFILM and FUJINON are trademarks of FUJIFILM Corporation and its affiliates. © 2022 FUJIFILM North America Corporation and its affiliates. All rights reserved.