

FUJIFILM

X | GFX



X-H2S  
READY FOR  
PRODUCTION





**X-H2s**  
READY FOR  
PRODUCTION

**LEARN  
MORE**

STACKED BSI  
**26.1 MEGA PIXEL**  
X-TRANS CMOS 5 SENSOR

DEEP LEARNING  
**SUBJECT DETECTION**  
AUTOFOCUS

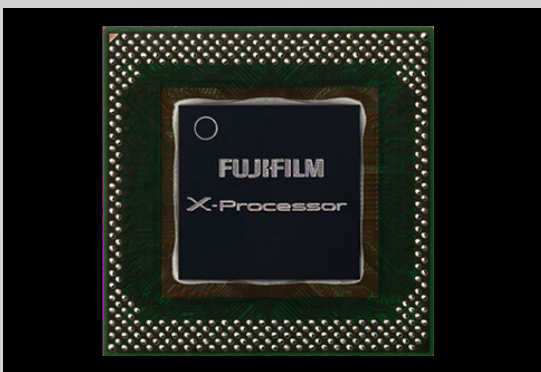
SUPERIOR  
**6.2K VIDEO**  
OPEN GATE

BLACKOUT-FREE  
**40FPS**  
BURST SHOOTING



## STACKED BSI X-TRANS CMOS 5

- 14-Stops Wide Dynamic Range
- 40fps Blackout-Free Burst Shooting (ES)
- 4x Readout Speeds\*<sup>1</sup> (up to 1/180s)
- Low Rolling Shutter



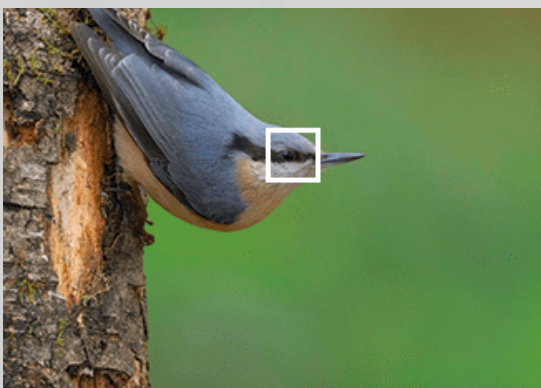
## X-PROCESSOR 5

- Dedicated AI Processor
- Internal Apple ProRes Codecs
- 10-Bit HEIF format
- Reduced Power Consumption



## HIGHLY-ROBUST MAGNESIUM BODY

- 79 Weather-sealed Points
- 5.76 M-Dot OLED EVF, 120fps, 0.8x Mag.
- Up To 7-Stops of IBIS
- Rated For 500k Shutter Actuation



## AI/DEEP LEARNING AUTOFOCUS

- Subject Detection AF (Animals, birds, cars, motorcycle, bicycles, airplanes, and trains)
- 425 Phase detection AF Points
- Low-light Focusing down to -7EV \*<sup>3</sup>



## ENHANCED VIDEO FUNCTIONS

- 4K/120P - 1080/240P High-speed Rec.
- 1.62 M-Dot Vari-angle Touch LCD
- HDMI Type A / 3.5mm Mic/Headphone
- 19 Film Simulation modes incl. ETERNA



## CINEMA QUALITY PERFORMANCE

- Open Gate 6.2K/30P 4:2:2 10-bit
- F-Log2 for 14+ Stops DR
- ProRes/ Black Magic Raw (HDMI out)
- CF Express B Card slot \*<sup>2</sup>

\*1 Compared to previous generation

\*2 CFexpress™ is a trademark or registered trademark of the CompactFlash Association

\*3 When XF50mmF1.0 R WR is attached.



**X-H2S**  
READY FOR  
PRODUCTION



## KIT OPTIONS



BODY ONLY  
MSRP: \$3200

## INCLUDED IN THE BOX

LI-ION BATTERY NP-W235S, AC POWER ADAPTER AC-5VJ, PLUG ADAPTER, USB CABLE, SHOULDER STRAP, BODY CAP, HOT SHOE COVER, FILE TRANSMITTER/ VERTICAL BATTERY GRIP CONNECTOR COVER, MEMORY CARD SLOT COVER, SYNC TERMINAL COVER, COOLING FAN CONNECTOR COVER

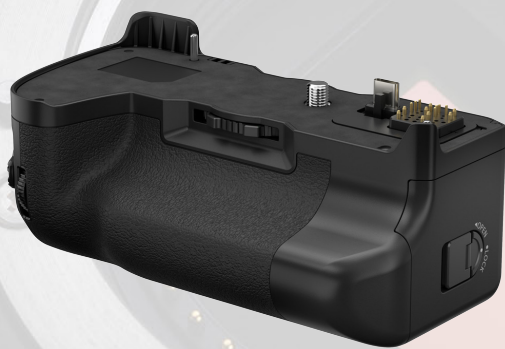
## ACCESSORIES



LI-ION BATTERY NP-W235  
MSRP: \$100  
FUJIFILM ITEM #: 16651409



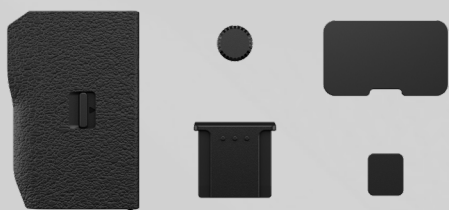
DUAL BATTERY CHARGER BC-W235  
MSRP: \$100  
FUJIFILM ITEM #: 16651459



VERTICAL BATTERY GRIP VG-XH  
MSRP: \$515  
FUJIFILM ITEM #: 16757320



FILE TRANSMITTER FT-XH  
MSRP: \$1280  
FUJIFILM ITEM #: 16775803



CVR-XH2 COVER KIT  
MSRP: \$26  
FUJIFILM ITEM #: 16757368



COOLING FAN FAN-001  
MSRP: \$260  
FUJIFILM ITEM #: 16757344



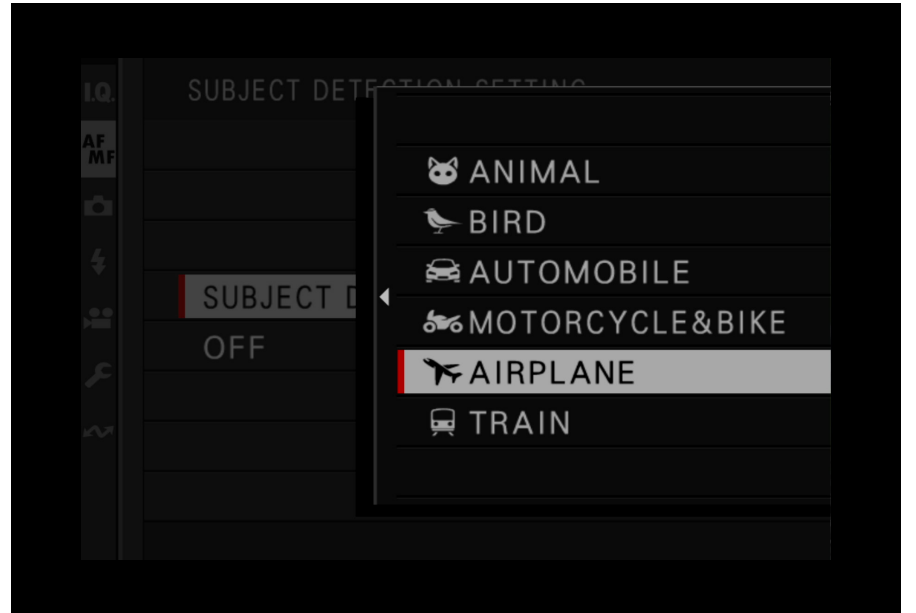


**X-H2s**  
READY FOR  
PRODUCTION



## 7 CUSTOM POSITIONS

Set the mode dial to one of the 7 custom setting positions (C1-C7) which can be assigned to frequently used settings including exposure and focusing options. They can also be set to either the photo or video mode. Adjustments made in the camera's menu will automatically be stored; select DISABLE in the AUTO UPDATE SETTING menu if you prefer not to have changes saved automatically.



## SUBJECT DETECTION AUTOFOCUS

The camera is able to detect and track a broader range of subjects, including animals, birds, cars, motorcycles, bicycles, airplanes, and trains – as well as human faces and eyes. Set the camera to AF-C and then go to MENU > AF/MF SETTING > SUBJECT DETECTION SETTING and select the desired subject tracking option. The camera is all set to start tracking the subject selected. Half press the shutter button to start focusing and fully press to take the shot. You can also enable PRE-AF to allow the camera to focus without half-pressing the shutter button.



## SUB MONITOR CUSTOMIZATION

Go to MENU > SET UP > SCREEN SET-UP > SUB MONITOR SETTING and choose whether you want to change the STILL MODE or the MOVIE MODE options. Select INFORMATION and scroll to the section of the screen you want to change and press OK and select the settings you want to assign to the section.



## RESIZING THE AF POINT

Press and hold the joystick to access the FOCUS LEVER SETTING and select your desired mode. To change the AF point size, press inward on the joystick and the focus points will appear. Rotate the rear command dial to change the size of the AF Point / Zone. When the AF MODE is set to "ALL", rotating the rear command dial will also cycle through the various AF modes (SINGLE POINT, ZONE, WIDE)



**X-H2S**  
READY FOR  
PRODUCTION

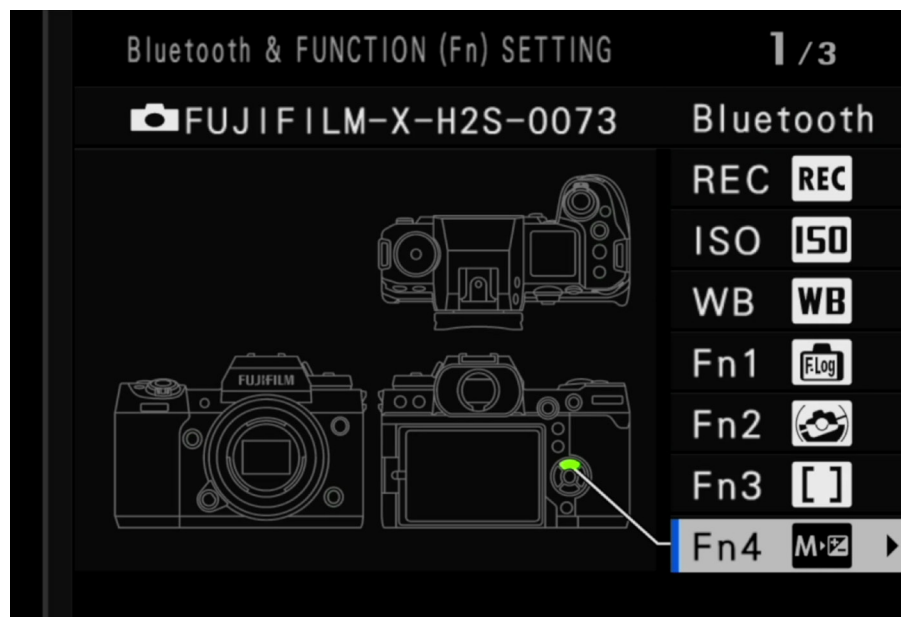
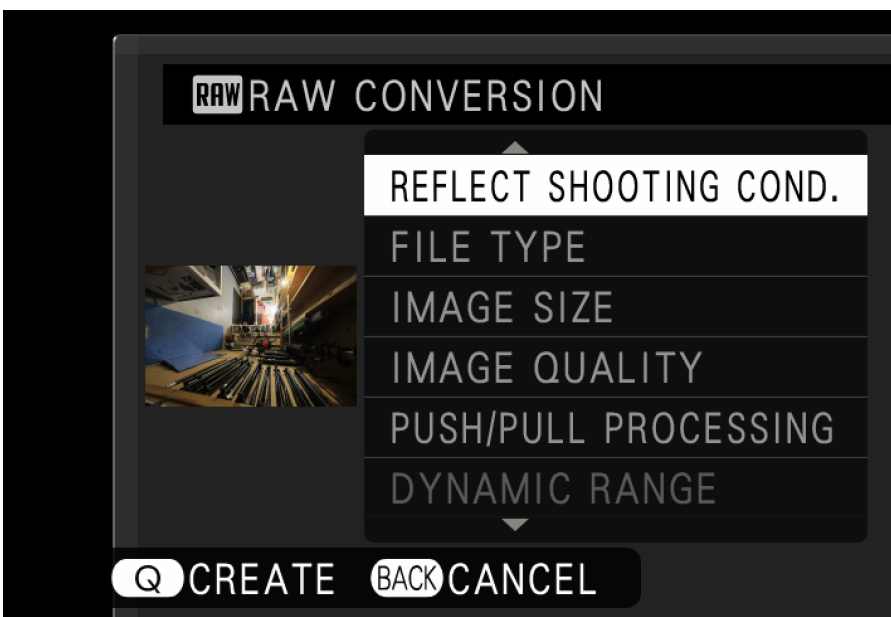


## SETTING UP FACE/EYE DETECTION

Intelligent Face Detection sets focus and exposure for human faces anywhere in the frame, preventing the camera from focusing on the background in portraits. You can also choose whether the camera detects and focuses on either the left or right eye. Go to MENU > AF/MF SETUP > FACE / EYE DETECTION SETTING to select your desired settings.

## 4K30P WEBCAM

The camera can be used as a high quality webcam for video conferencing or streaming. Go to MENU > NETWORK / USB SETTING > SELECT CONNECTION SETTING and select USB WEBCAM. The camera will be detected as a webcam when connected to a computer as "X-H2S". Set the resolution and frame rate in the MOVIE SETTING MENU > MOVIE MODE. You can also change the white balance in the IQ Menu.



## IN-CAMERA RAW CONVERSION

To edit a RAW image in the camera, select it in the playback mode then press the "Q" button. Scroll and adjust settings including: Film Simulation, Highlight tone, Sharpness and more. After making the adjustments, press the "Q" button to preview the image. Review the image on screen and press "OK" to save the file or "Back" to make additional adjustments.

## FUNCTION (FN) BUTTONS

To customize your Fn buttons, long press the DISP. BACK button. A diagram of the camera and the Fn buttons will appear. Select the Fn button you want to customize and scroll through the features to choose the function you want to assign.





**X-H2S**  
READY FOR  
PRODUCTION



## SPECIFICATIONS

**FUJIFILM**  
X | GFX

<b>Model Name</b>	FUJIFILM X-H2S
<b>Number of effective pixels</b>	26.1 million pixels
<b>Image Sensor</b>	23.5mm x 15.6mm (APS-C) X-Trans CMOS 5 HS with primary color filter
<b>Storage media</b>	SD Card (-2GB) / SDHC Card (-32GB) / SDXC Card (-2TB) / UHS-I / UHS-II / Video Speed Class V90 / CFexpress Type B Card (-2TB) *Please check <a href="#">Compatibility</a> for more detail. *Please check <a href="#">the list of the operation confirmed CFexpress Type B Card</a>
<b>File format of still image</b>	DCF Compliant with Design rule for Camera File system (DCF2.0) JPEG Exif Ver.2.32*1 HEIF 4:2:2 10bit RAW 14bit RAW (RAF original format) TIFF 8bit / 16bit RGB (In-camera Raw Conversion Only)
<b>Lens mount</b>	FUJIFILM X Mount
<b>Sensitivity Standard output Extended output</b>	Still Image Standard Output: AUTO1 / AUTO2 / AUTO3 / ISO160 - 12800 (1/3 step) Extended Output: ISO80 / ISO100 / ISO125 / ISO25600 / ISO51200 Movie Standard Output: AUTO / ISO160 - 12800 (1/3 step) Extended Output: ISO25600
<b>Exposure control</b>	TTL 256-zone metering, Multi / Spot / Average / Center Weighted
<b>Exposure mode</b>	P (Program AE) / A (Aperture Priority AE) / S (Shutter Speed Priority AE) / M (Manual Exposure)
<b>Image stabilizer</b>	Mechanism Image sensor shift mechanism with 5-axis compensation Compensation Effect 7.0 stops *based on CIPA standard *Pitch/yaw shake only *With XF35mmF1.4 R lens mounted Digital Image Stabilization Yes (movie mode only) IS MODE BOOST Yes (movie mode only)
<b>Shutter type</b>	Focal Plane Shutter
<b>Movie recording File Format Recording time</b>	6.2K / DCI 4K / 4K / FULL HD MOV: Apple ProRes 422 HQ, Linear PCM (Stereo sound 24bit / 48KHz sampling) Apple ProRes 422, Linear PCM (Stereo sound 24bit / 48KHz sampling) Apple ProRes 422 LT, Linear PCM (Stereo sound 24bit / 48KHz sampling) HEVC/H.265, Linear PCM (Stereo sound 24bit / 48KHz sampling) MPEG-4 AVC/H.264, Linear PCM (Stereo sound 24bit / 48KHz sampling) MP4: MPEG-4 AVC/H.264, AAC All Intra / Long GOP Recording time can become short depending on the temperature and/or shooting conditions *See full spec sheet for all resolution / Bitrate available.
<b>LCD monitor</b>	3.0 inch vari-angle Touch Screen Color LCD Monitor Aspect Ratio: 3:2 Dots: Approx. 1.62 million dots
<b>Viewfinder</b>	EVF: 0.5 inch OLED Color Viewfinder, Approx. 5.76 million dots Coverage of Viewing Area vs. Capturing Area: Approx. 100% Eyepoint: Approx. 24mm (from the Rear End of the Camera's Eyepiece) Diopter Adjustment: -5 - +3m-1 Magnification: 0.80x with 50mm Lens (35mm Equivalent) at infinity and Diopter set to -1.0m-1 Diagonal Angle of View: approx. 40° (Horizontal angle of view: approx. 32° ) Built-In Eye Sensor
<b>Terminal Digital interface HDMI output Other</b>	USB Type-C (USB3.2 Gen2x1) HDMI connector (Type A) ø3.5mm, stereo mini connector (Microphone) ø3.5mm, stereo mini connector (Headphone) ø2.5mm, Remote Release Connector Hot shoe Synchronized terminal
<b>Dimensions</b>	Width: 136.3mm Height: 92.9mm Depth: 84.6mm (Minimum Depth) 42.8mm
<b>Weight</b>	including battery and memory card: Approx. 660g excluding battery and memory card: Approx. 579g
<b>Notes</b>	*1 Please see the Fujifilm website to check SD memory card compatibility. *2 Exif 2.3 is a digital camera file format that contains a variety of shooting information for optimal printing.



# FUJIFILM

---

## X | GFX



  **FUJIFILM\_NORTHAMERICA**

VISIT [WWW.FUJIFILM-X.COM](http://WWW.FUJIFILM-X.COM) OR YOUR AUTHORIZED DEALER FOR MORE INFORMATION.

FUJIFILM and FUJINON are trademarks of FUJIFILM Corporation and its affiliates. © 2022 FUJIFILM North America Corporation and its affiliates. All rights reserved.