

FUJIFILM

X | GFX



GFX 50S II
MORE THAN
FULL FRAME



GFX 50s II
MORE THAN
FULL FRAME



LARGE FORMAT
51.4 MEGAPIXEL
CMOS SENSOR

X-PROCESSOR 4
QUAD-CORE
IMAGING ENGINE

ISO
100-12,800
SENSITIVITY RANGE

IN-BODY
5 AXIS
STABILIZATION



51.4MP CMOS SENSOR

- 14-Bit RAW output
- 14 stops of dynamic range
- 4:3 aspect ratio



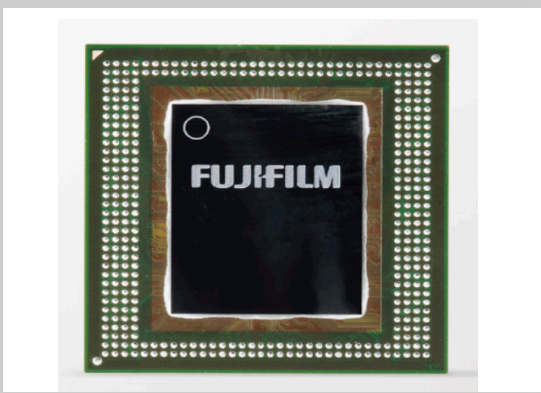
IN-BODY IMAGE STABILIZATION

- 20% smaller, 10% lighter than GFX100
- Up to 6.5 stops of stabilization
- Pixel Shift Multi-Shot (200MP)



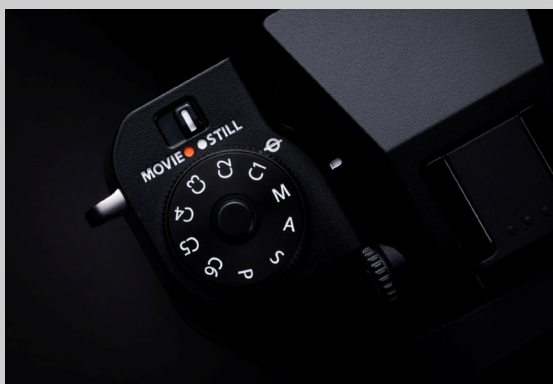
DURABLE & LIGHTWEIGHT

- Magnesium alloy frame
- Weather resistant
- Weigh only 900g
- NP-W235 Li-ion (455 shots)



QUAD-CORE X-PROCESSOR 4

- 79+ upgraded functions / features
- 19 Film Simulations incl. Nostalgic Neg.
- Contrast Rapid AF 0.02s*¹



MODE DIAL

- Traditional PASM Dial
- C1 to C6 position for photo & video
- Still / Movie selector for easy switching



IMPROVED AF PERFORMANCE

- 425 AF Points
- Autofocus Down to -3.5EV
- Upgraded Face/Eye detection

*¹When GF80mmF1.7 is attached



GFX 50s II
MORE THAN
FULL FRAME



KIT OPTIONS



BODY ONLY
MSRP: \$5,000



WITH GF35-70MMF4.5-5.6 WR
MSRP: \$5,625

INCLUDED IN THE BOX

LI-ION BATTERIES NP-W235, AC POWER ADAPTER AC-5VJ, PLUG ADAPTER, USB CABLE, BODY CAP, SHOULDER STRAP, CABLE PROTECTOR.

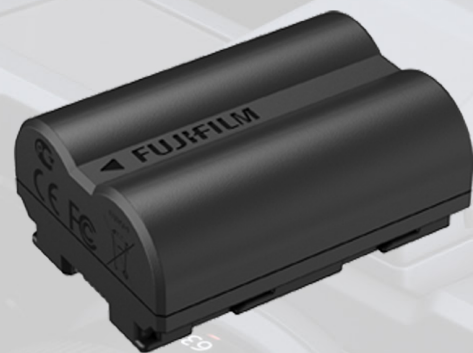
ACCESSORIES



DUAL BATTERY CHARGER
BC-W235
MSRP: \$100



0 74101 20211 3



LI-ION BATTERY
NP-W235
MSRP: \$100



0 74101 20228 1



MACRO EXTENSION TUBE
MCEX-18G WR MCEX-45G WR
MSRP: \$410 MSRP: \$410



0 74101 03656 5



0 74101 03698 5



METAL HAND GRIP
MHG-100S
MSRP: \$195



0 74101 20472 8



GFX 50s II
MORE THAN
FULL FRAME

LEARN
MORE



CHANGING EXPOSURE SETTINGS

Rotate the rear command dial to change the shutter speed. To change the aperture using the command dial, set the aperture ring on the lens to "C". To change ISO, rotate the front command dial. When the aperture ring is set to "C", click on the front command dial to toggle between aperture/ISO controls.



FLASH PHOTOGRAPHY

If you are shooting with strobes, you will need to disable the exposure preview. Go to SET UP > SCREEN SETTING > PREVIEW EXP./WB IN MANUAL MODE and select OFF. This will disable the exposure and white balance preview. To quickly toggle between the 3 options, you can assign this to a FN button.



SUB LCD MONITOR DISPLAY

The 1.28-inch monochrome LCD monitor displays information such as shutter speed, aperture, ISO, exposure compensation and exposure mode. Press MENU > SET-UP > SCREEN SET-UP > SUB MONITOR SETTING to customize the display. You can customize up to eight items to be displayed on the monitor; it also has a backlight for viewing in low light conditions.



RESIZING THE AF POINT

Press and hold the joystick to access the FOCUS LEVER SETTING and select your desired mode. To change the AF point size, press inward on the joystick and the focus points will appear. Rotate the rear command dial to change the size of the AF Point / Zone. When the AF MODE is set to "ALL", rotating the rear command dial will also cycle through the various AF modes (SINGLE POINT, ZONE, WIDE).



GFX 100s
MORE THAN
FULL FRAME

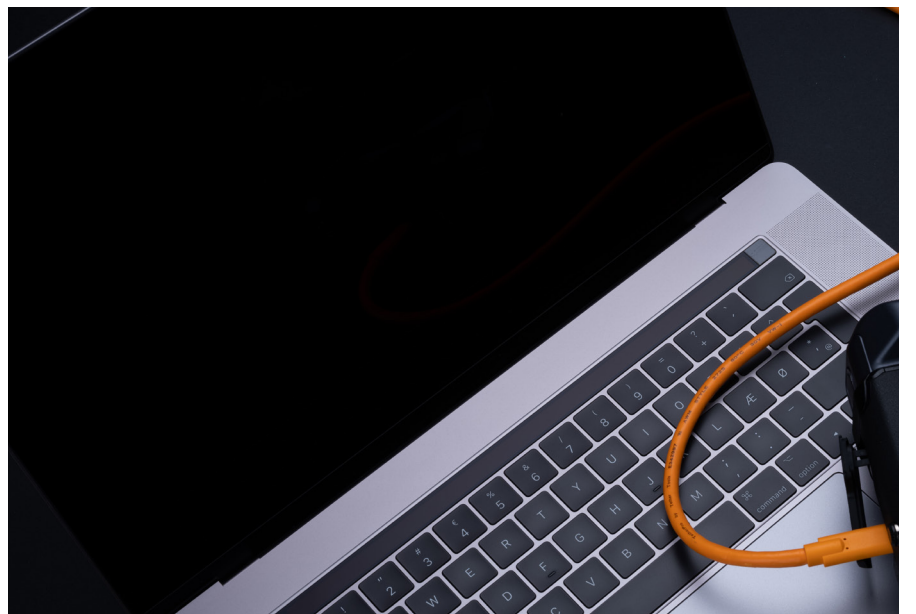
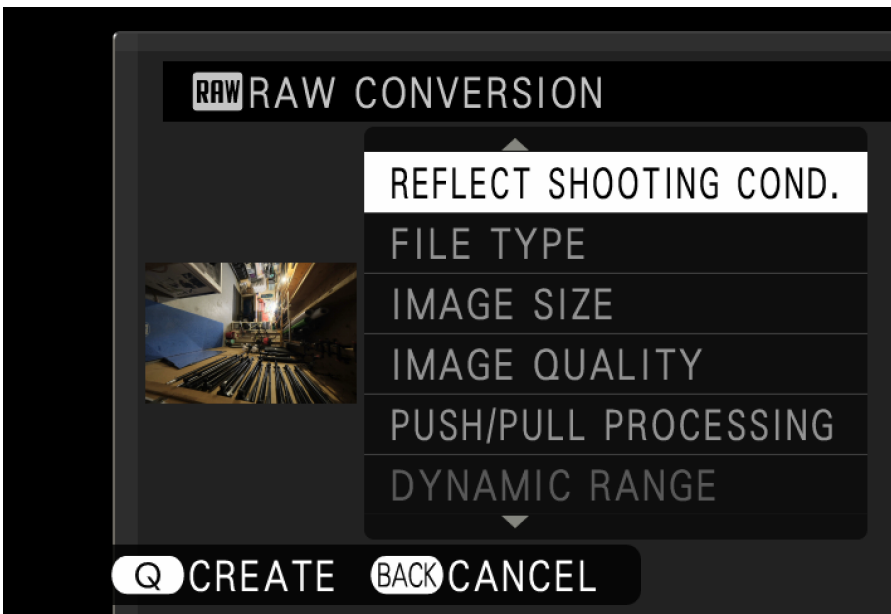


SETTING UP FACE/EYE DETECTION

Intelligent Face Detection sets focus and exposure for human faces anywhere in the frame, preventing the camera from focusing on the background in portraits. You can also choose whether the camera detects and focuses on either the left or right eye. Go to MENU > AF/MF SETUP > FACE / EYE DETECTION SETTING to select your desired settings.

6 CUSTOM SETTINGS POSITIONS

SET THE MODE DIAL TO ONE OF THE 6 CUSTOM SETTING POSITIONS (C1-C6) WHICH CAN BE ASSIGNED TO FREQUENTLY USED SETTINGS. ADJUSTMENTS MADE IN THE CAMERA'S MENU WILL AUTOMATICALLY BE STORED; SELECT DISABLE IN THE AUTO UPDATE SETTING MENU IF YOU PREFER NOT TO HAVE CHANGES SAVED AUTOMATICALLY.



IN-CAMERA RAW CONVERSION

To edit a RAW image in the camera, select it in the playback mode then press the "Q" button. Scroll and adjust settings including: Film Simulation, Highlight tone, Sharpness and more. After making the adjustments, press the "Q" button to preview the image. Review the image on screen and press "OK" to save the file or "Back" to make additional adjustments.

TETHERING WITH THE CAMERA

To set the camera for tethering, go to MENU > SET UP > CONNECTION SETTING > PC CONNECTION MODE and set it to USB AUTO. The camera is now ready to be connected to a computer for tethering. Adobe Lightroom users can download the free "FUJIFILM Tethering Shooting Plug-in PRO for GFX". Capture One users do not require any Plug-in for tethering.



GFX 50S II
MORE THAN
FULL FRAME



SPECIFICATIONS

FUJIFILM
X | GFX

Model Name	FUJIFILM GFX50S II
Number of effective pixels	51.4 million pixels
Image Sensor	43.8mm×32.9mm Bayer array with primary color filter
Storage media	SD Card (-2GB) / SDHC Card (-32GB) / SDXC Card (-512GB) UHS-I / UHS-II / Video Speed Class V90 *1
File format of still image	DCF Compliant with Design rule for Camera File system (DCF2.0) JPEG Exif Ver.2.32*2 RAW 14bit RAW (RAF original format) TIFF 8bit / 16bit RGB (In-camera Raw Conversion Only)
Lens mount	FUJIFILM G mount
Sensitivity Standard output Extended output	AUTO1/AUTO2/AUTO3 (up to ISO12800) / ISO100~12800 (1/3 step) (Movie: AUTO / ISO200~12800) ISO50 / 25600 / 51200 / 102400 (Movie: ISO25600)
Exposure control	TTL 256-zone metering, Multi / Spot / Average / Center Weighted
Exposure mode	P (Program AE) / A (Aperture Priority AE) / S (Shutter Speed Priority AE) / M (Manual Exposure)
Exposure compensation	-5.0EV - +5.0EV 1/3EV step (Movie: -2.0EV - +2.0EV)
Shutter type	Focal Plane Shutter
Movie recording File Format Movie compression Frame rate Recording time	MOV: MPEG-4 AVC/H.264, Linear PCM (Stereo sound 24bit / 48KHz sampling) Long GOP [Full HD(16:9)] 1920×1080 29.97p/25p/24p/23.98p 50Mbps Up to 120min. *For recording movies, use a SD memory card with UHS Speed Class 1 or higher. *Recording time can become short depending on the temperature and/or shooting conditions.
Viewfinder	EVF: 0.5 inch OLED Color Viewfinder, Approx. 3.69 million dots Coverage of Viewing Area vs. Capturing Area: Approx. 100% Eyepoint: Approx. 23mm (from the Rear End of the Camera's Eyepiece) Diopter Adjustment: -4 +2m-1 Magnification: 0.77x with 50mm Lens (35mm Equivalent) at infinity and Diopter set to -1.0m-1 Diagonal Angle of View: approx. 38° (Horizontal angle of view: approx. 30°) Built-In Eye Sensor
LCD monitor	3.2 inch Tilt-Type(Three Direction) Touch Screen Color LCD Monitor Aspect Ratio: 4:3 Dots: Approx. 2.36 million dots
Terminal Digital interface HDMI output Other	USB Type-C USB3.2 Gen1x1 HDMI Micro connector (Type D) ø3.5mm, stereo mini connector (Microphone) ø3.5mm, stereo mini connector (Headphone) ø2.5mm, Remote Release Connector Hot shoe Synchronized terminal
Dimensions	150mm (W) × 104.2mm (H) × 87.2mm (D) (Minimum Depth : 44mm)
Weight	Including battery and SD memory card Approx. 900g Excluding battery and SD memory card Approx. 821g
Notes	*1 Please see the Fujifilm website to check SD memory card compatibility. *2 Exif 2.3 is a digital camera file format that contains a variety of shooting information for optimal printing.

FUJIFILM

X | GFX



  **FUJIFILM_NORTHAMERICA**

VISIT WWW.FUJIFILM-X.COM OR YOUR AUTHORIZED DEALER FOR MORE INFORMATION.

FUJIFILM and FUJINON are trademarks of FUJIFILM Corporation and its affiliates. © 2021 FUJIFILM North America Corporation and its affiliates. All rights reserved.