

### 51.4MP CMOS SENSOR

- 14-Bit RAW output
- 14 stops of dynamic range
- 4:3 aspect ratio



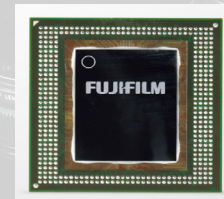
### IN-BODY IMAGE STABILIZATION

- 20% smaller, 10% lighter than GFX100
- Up to 6.5 stops of stabilization
- Pixel Shift Multi-Shot (200MP)



### DURABLE & LIGHTWEIGHT

- Magnesium alloy frame
- Weather resistant
- Weigh only 900g
- NP-W235 Li-ion (455 shots)



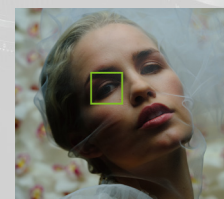
### QUAD-CORE X-PROCESSOR 4

- 79+ upgraded functions / features
- 19 Film Simulations incl. Nostalgic Neg.
- Contrast Rapid AF 0.02s\*1



### MODE DIAL

- Traditional PASM Dial
- C1 to C6 position for photo & video
- Still / Movie selector for easy switching



### IMPROVED AF PERFORMANCE

- 425 AF Points
- Autofocus Down to -3.5EV
- Upgraded Face/Eye detection



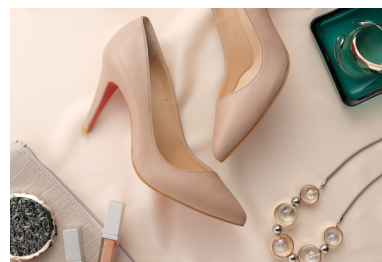
### CHANGING EXPOSURE SETTINGS

Rotate the rear command dial to change the shutter speed. To change the aperture using the command dial, set the aperture ring on the lens to "C". To change ISO, rotate the front command dial. When the aperture ring is set to "C", click on the front command dial to toggle between aperture/ISO controls.



### SUB LCD MONITOR DISPLAY

The 1.28-inch monochrome LCD monitor displays information such as shutter speed, aperture, ISO, exposure compensation and exposure mode. Press MENU > SET-UP > SCREEN SET-UP > SUB MONITOR SETTING to customize the display. You can customize up to eight items to be displayed on the monitor; it also has a backlight for viewing in low light conditions.



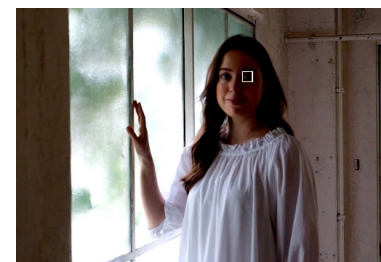
### FLASH PHOTOGRAPHY

If you are shooting with strobes, you will need to disable the exposure preview. Go to SET UP > SCREEN SETTING > PREVIEW EXP./WB IN MANUAL MODE and select OFF. This will disable the exposure and white balance preview. To quickly toggle between the 3 options, you can assign this to a FN button.



### RESIZING THE AF POINT

Press and hold the joystick to access the FOCUS LEVER SETTING and select you desired mode. To change the AF point size, press inward on the joystick and the focus points will appear. Rotate the rear command dial to change the size of the AF Point / Zone. When the AF MODE is set to "ALL", rotating the rear command dial will also cycle through the various AF modes (SINGLE POINT, ZONE, WIDE).



### SETTING UP FACE/EYE DETECTION

Intelligent Face Detection sets focus and exposure for human faces anywhere in the frame, preventing the camera from focusing on the background in portraits. You can also choose whether the camera detects and focuses on either the left or right eye. Go to MENU > AF/MF SETUP > FACE / EYE DETECTION SETTING to select your desired settings. By default, the Face/Eye AF setting is assigned to the Fn4 button.

## KIT OPTIONS



BODY ONLY  
MSRP: \$5,000



WITH GF35-70MMF4.5-5.6 WR  
MSRP: \$5,625

## INCLUDED IN THE BOX

LI-ION BATTERIES NP-W235, AC POWER ADAPTER AC-5VJ, PLUG ADAPTER, USB CABLE, BODY CAP, SHOULDER STRAP, CABLE PROTECTOR.

## ACCESSORIES



DUAL BATTERY CHARGER  
BC-W235  
MSRP: \$100



LI-ION BATTERY  
NP-W235  
MSRP: \$100



MACRO EXTENSION TUBE  
MCEX-18G WR MCEX-45G WR  
MSRP: \$410 MSRP: \$410



METAL HAND GRIP  
MHG-100S  
MSRP: \$195



## SPECIFICATIONS

**FUJIFILM**  
X | GFX

|  |  |
|--|--|
| <b>Model Name</b>  | FUJIFILM GFX50S II   |
| <b>Number of effective pixels</b>  | 51.4 million pixels  |
| <b>Image Sensor</b>  | 43.8mm×32.9mm Bayer array with primary color filter  |
| <b>Storage media</b>   | SD Card (-2GB) / SDHC Card (-32GB) / SDXC Card (-512GB) UHS-I / UHS-II / Video Speed Class V90 *1  |
| <b>File format of still image</b>  | DCF Compliant with Design rule for Camera File system (DCF2.0)<br>JPEG Exif Ver.2.32*2<br>RAW 14bit RAW (RAF original format)<br>TIFF 8bit / 16bit RGB (In-camera Raw Conversion Only)   |
| <b>Lens mount</b>  | FUJIFILM G mount   |
| <b>Sensitivity</b><br><b>Standard output</b><br><b>Extended output</b>   | AUTO1/AUTO2/AUTO3 (up to ISO12800) / ISO100-12800 (1/3 step) (Movie: AUTO / ISO200-12800)<br>ISO50 / 25600 / 51200 / 102400 (Movie: ISO25600)  |
| <b>Exposure control</b>  | TTL 256-zone metering, Multi / Spot / Average / Center Weighted  |
| <b>Exposure mode</b>   | P (Program AE) / A (Aperture Priority AE) / S (Shutter Speed Priority AE) / M (Manual Exposure)  |
| <b>Exposure compensation</b>   | -5.0EV - +5.0EV 1/3EV step (Movie: -2.0EV - +2.0EV)  |
| <b>Shutter type</b>  | Focal Plane Shutter  |
| <b>Movie recording</b><br><b>File Format</b><br><b>Movie compression</b><br><b>Frame rate</b><br><b>Recording time</b> | MOV:<br>MPEG-4 AVC/H.264, Linear PCM (Stereo sound 24bit / 48KHz sampling)<br>Long GOP<br>[Full HD(16:9)] 1920×1080 29.97p/25p/24p/23.98p 50Mbps Up to 120min.<br>*For recording movies, use a SD memory card with UHS Speed Class 1 or higher.<br>*Recording time can become short depending on the temperature and/or shooting conditions.   |
| <b>Viewfinder</b>  | EVF: 0.5 inch OLED Color Viewfinder, Approx. 3.69 million dots<br>Coverage of Viewing Area vs. Capturing Area: Approx. 100%<br>Eyepoint: Approx. 23mm (from the Rear End of the Camera's Eyepiece)<br>Diopter Adjustment: -4 +2m-1<br>Magnification: 0.77x with 50mm Lens (35mm Equivalent) at infinity and Diopter set to -1.0m-1<br>Diagonal Angle of View: approx. 38° (Horizontal angle of view: approx. 30°)<br>Built-In Eye Sensor |
| <b>LCD monitor</b>   | 3.2 inch Tilt-Type(Three Direction) Touch Screen Color LCD Monitor<br>Aspect Ratio: 4:3<br>Dots: Approx. 2.36 million dots   |
| <b>Terminal</b><br><b>Digital interface</b><br><b>HDMI output</b><br><b>Other</b>                                      | USB Type-C USB3.2 Gen1x1<br>HDMI Micro connector (Type D)<br>ø3.5mm, stereo mini connector (Microphone)<br>ø3.5mm, stereo mini connector (Headphone)<br>ø2.5mm, Remote Release Connector<br>Hot shoe<br>Synchronized terminal  |
| <b>Dimensions</b>  | 150mm (W) × 104.2mm (H) × 87.2mm (D)<br>(Minimum Depth : 44mm)   |
| <b>Weight</b>  | Including battery and SD memory card<br>Approx. 900g<br><br>Excluding battery and SD memory card<br>Approx. 821g   |
| <b>Notes</b>   | *1 Please see the Fujifilm website to check SD memory card compatibility.<br>*2 Exif 2.3 is a digital camera file format that contains a variety of shooting information for optimal printing.   |

VISIT [WWW.FUJIFILM-X.COM](http://WWW.FUJIFILM-X.COM) OR YOUR AUTHORIZED DEALER FOR MORE INFORMATION.

FUJIFILM and FUJINON are trademarks of FUJIFILM Corporation and its affiliates. © 2021 FUJIFILM North America Corporation and its affiliates. All rights reserved.