

FUJIFILM
X | GFX



X-E4
CARRY LESS
CREATE MORE



X-E4
CARRY LESS
CREATE MORE



X-TRANS
26.1 MEGAPIXELS
BSI CMOS 4 SENSOR

TILT-ABLE
180°
TOUCH SCREEN

SUPERIOR
4K VIDEO
NO CROP

HIGH SPEED
240FPS
1080P VIDEO



4TH GEN. SENSOR & PROCESSOR

- APS-C X-Trans BSI CMOS 4 sensor
- Quad-Core CPU X-Processor 4
- 30fps black-out free continuous shooting



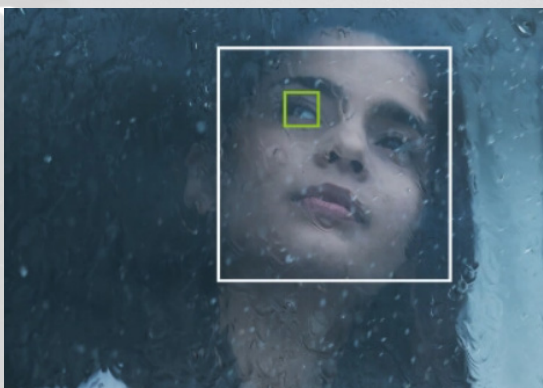
180° FORWARD TILT-ABLE LCD

- 3.0-inch / 3:2 ratio
- 1.62M-dot LCD Monitor
- Touch screen with 4 T-FN



SUPERIOR 4K/30P VIDEO

- F-Log recording / F-Log View Assist
- High-speed recording at Full HD 240p
- 3.5mm Microphone & Headphone (USB-C)



ENHANCED FACE/EYE AUTOFOCUS

- 425 AF Points with 100% PDAF coverage
- Low-light focusing down to -7.0EV*1
- Face/Eye AF available in photo & video



BUILT-IN BLUETOOTH®/WI-FI™

- Wireless remote shooting via the app
- Geotagging via Bluetooth®
- Firmware update via smartphone



LEGACY IN COLOUR SCIENCE

- 18 digital Film Simulations
- Cinematic look with ETERNA
- Stunning out-of-camera JPEG quality

*1 When XF50mmF1.0 R WR is attached.



X-E4
CARRY LESS
CREATE MORE



KIT OPTIONS



BODY ONLY
MSRP: \$1,100



XF27MM F2.8 R WR
MSRP: \$1,350

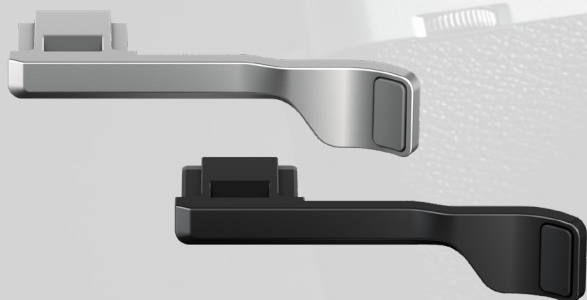
COLOURS

■ BLACK ■ SILVER

INCLUDED IN THE BOX

LI-ION BATTERY NP-W126S, USB CABLE,
HEADPHONE ADAPTER, SHOULDER STRAP, BODY
CAP, OWNER'S MANUAL

ACCESSORIES



THUMB REST TR-XE4
MSRP: \$95

BLACK

SILVER



0 74101 20470 4



0 74101 20469 8



METAL HAND GRIP
MHG-XE4
MSRP: \$120



0 74101 20476 6



LEATHER CASE
BLC-XE4
MSRP: \$105



0 74101 20467 4



XF23MM F2 R WR
MSRP: \$600

BLACK

SILVER



0 74101 03012 9



0 74101 03014 3

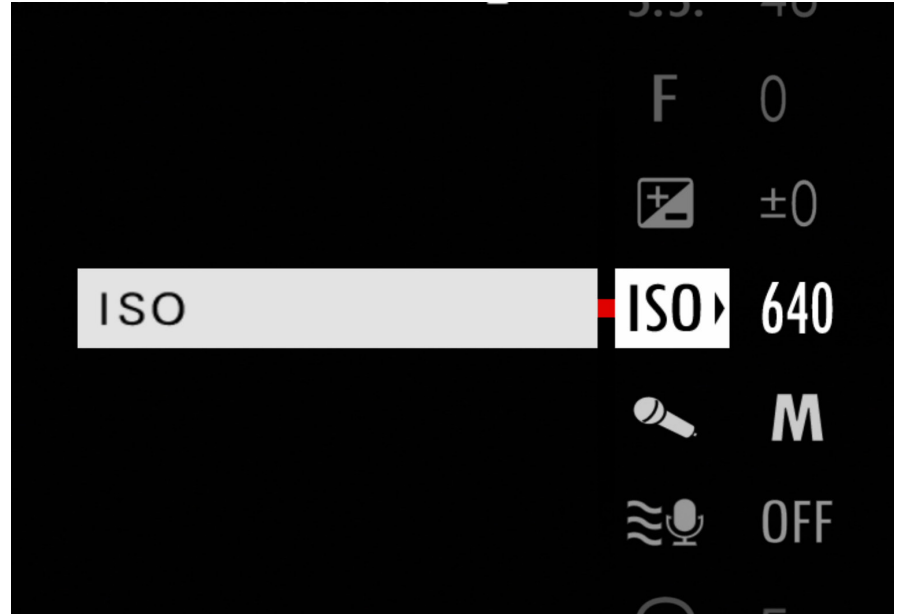


X-E4
CARRY LESS
CREATE MORE



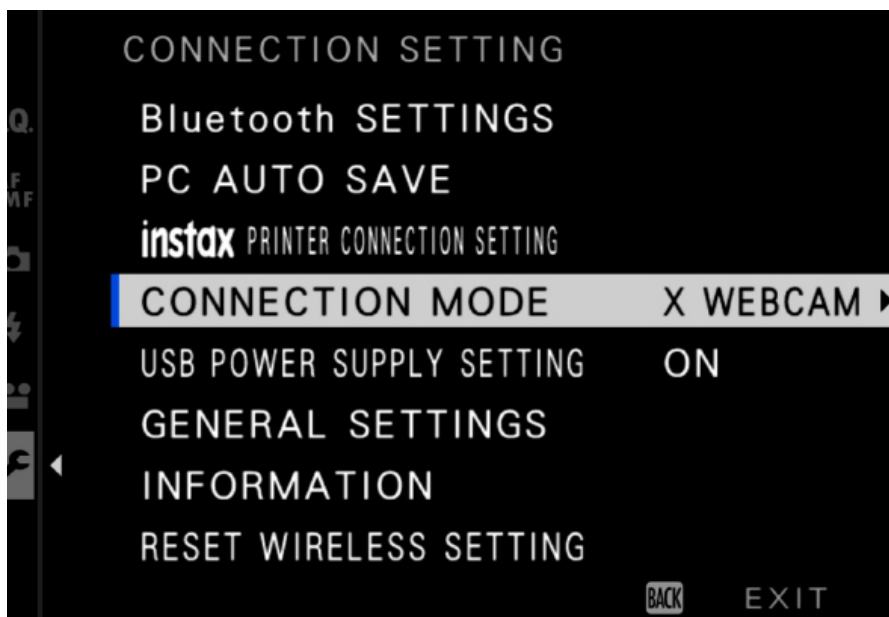
PROGRAM (P) AUTO MODE

A new “Program “P” position has been added which allows you to switch to programmed auto shooting for those quick capture, photo opportunities, temporarily freeing you from the need to worry about any of the settings.



INDEPENDENT MOVIE SETTINGS

Go to the MOVIE SETTING menu and enable the MOVIE SILENT CONTROL feature. By activating this feature, the shutter speed and aperture dials will be deactivated and will be controlled via touch screen instead. This will allow for independent exposure settings for video recording.



FUJIFILM X WEBCAM

To use the X-E4 as a webcam, simply download the free Fujifilm X Webcam software from the Fujifilm Software Download website and follow the instructions to install it on your computer. In the camera’s menu, navigate to MENU > SET UP > CONNECTION SETTING > CONNECTION MODE and select “X WEBCAM”. Connect the camera to the computer with the supplied USB cable and turn it on. Ensure the “FUJIFILM X WEBCAM” is selected as your camera in the videoconferencing software.

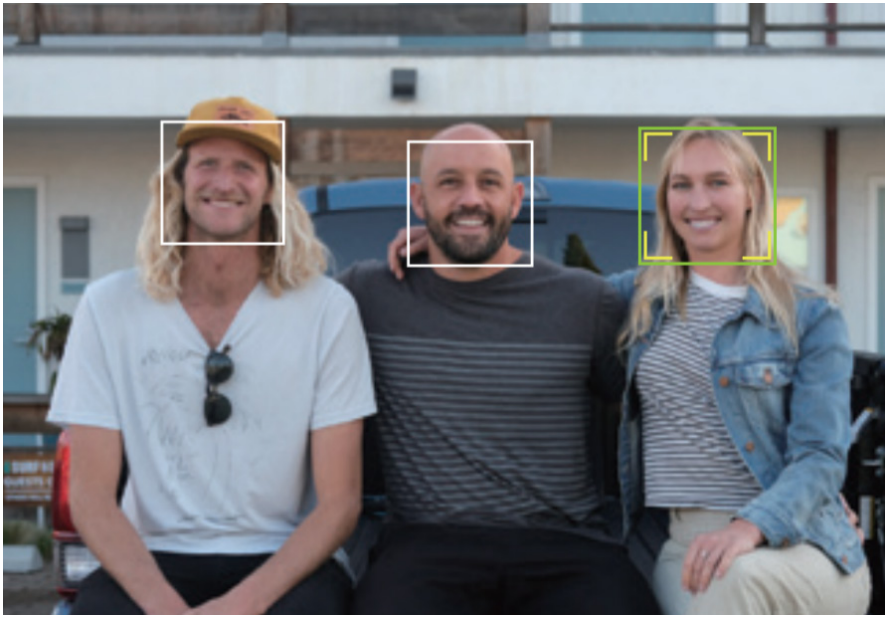


BLUETOOTH REMOTE RELEASE

You can trigger the shutter remotely from a smartphone or tablet. Follow the instructions to connect the camera to the FUJIFILM remote app to use this feature. The camera will automatically connect to the app once paired. Select the Remote Release icon and tap the shutter button to take pictures. When the camera is configured for bulb photography, you can slide the shutter button up to start the exposure.

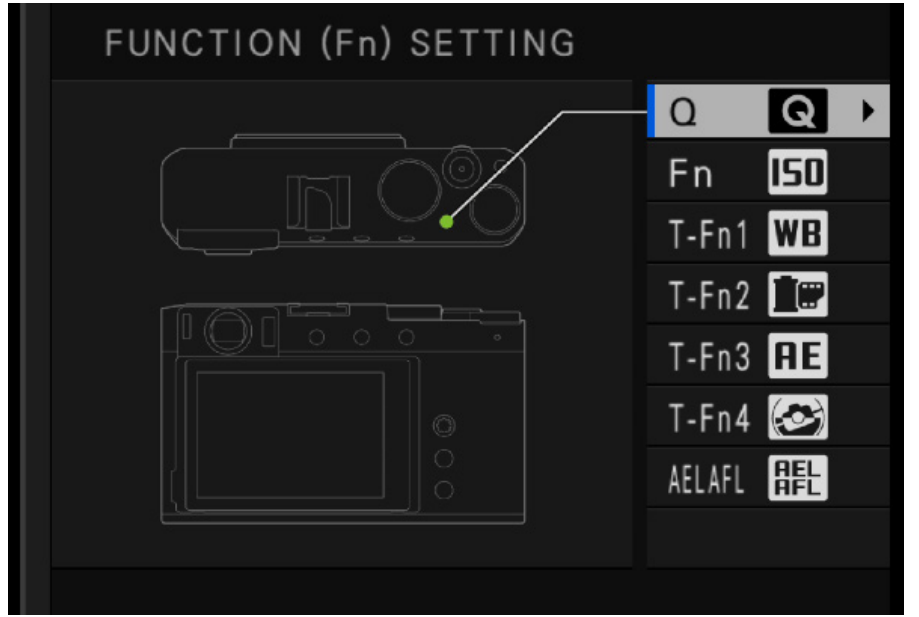


X-E4
 CARRY LESS
 CREATE MORE



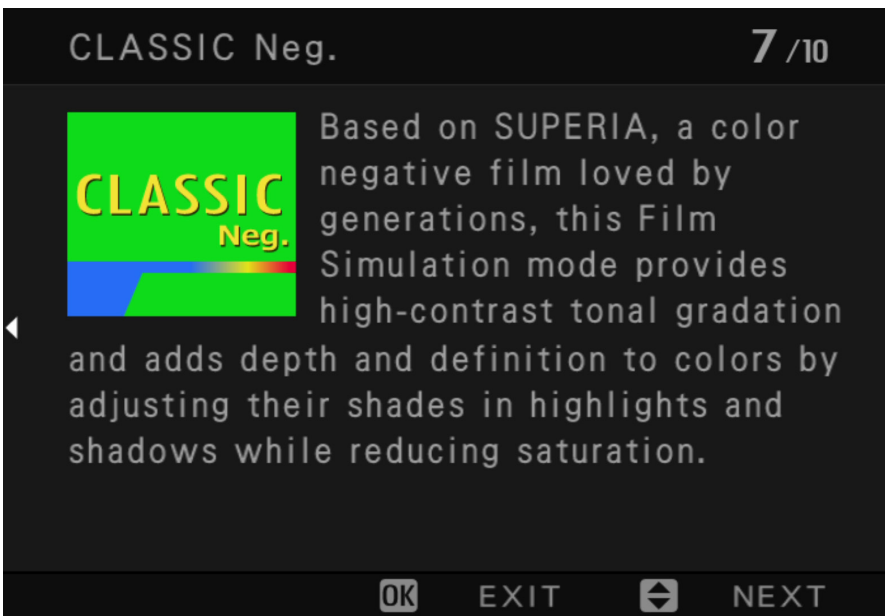
FACE SELECT

FACE SELECT can be enabled/disabled by pressing the function (Fn) button to which FACE SELECT is assigned. Enabling the FACE SELECT function allows the Focus Lever or Touch Controls to select the face that will be used for focus.



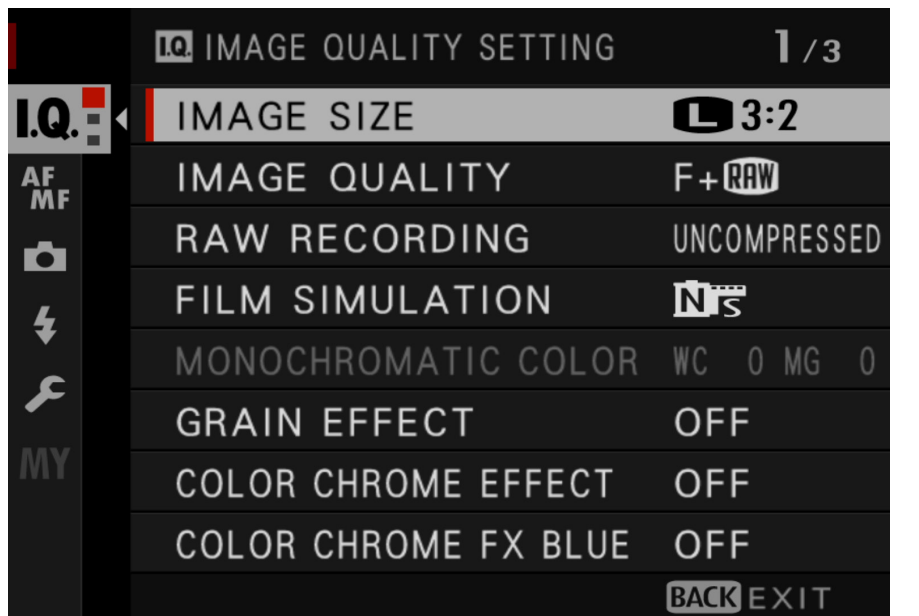
FUNCTION (FN) BUTTONS

To customize your Fn buttons, long press the DISP. BACK button. A diagram of the camera and the Fn buttons will appear. Select the Fn button you want to customize and scroll through the features to choose the function you want to assign.



FILM SIMULATIONS SETTINGS

Use the command dial to quickly change the 18 FILM SIMULATION modes. Press the "Q" button to navigate through the descriptions of the other FILM SIMULATION modes to find its unique characteristics. Rotate the Fn Dial to navigate through the descriptions of the various FILM SIMULATIONS to find the one that best suits the scene.



NAVIGATING MENUS

The 8-Way AF lever can be used to navigate the menus. In addition, you can quickly navigate the menu using the front command dial to scroll individual items.



X-E4
CARRY LESS
CREATE MORE



SPECIFICATIONS

FUJIFILM
X | GFX

Model Name	FUJIFILM X-E4
Number of effective pixels	26.1 million pixels
Image Sensor	23.5mm×15.6mm (APS-C) X-Trans CMOS 4 with primary color filter.
Storage media	SD Card (~2GB) / SDHC Card (~32GB) / SDXC Card (~2TB) UHS-I *1
File format of still image	Compliant with Design rule for Camera File system (DCF2.0) JPEG: Exif Ver.2.32 *2 RAW: 14bit RAW (RAF original format)
Lens mount	FUJIFILM X Mount
Sensitivity Standard output Extended output	AUTO1 / AUTO2 / AUTO3 (up to ISO12800) / ISO160 to 12800(1/3 step) ISO80 /100 /125 / 25600 / 51200
Exposure control	TTL 256-zone metering, Multi / Spot / Average / Center Weighted
Exposure mode	P (Program AE) / A (Aperture Priority AE) / S (Shutter Speed Priority AE) / M (Manual Exposure)
Exposure compensation	-5.0EV~+5.0EV 1/3EV step (Movie: -2.0EV~+2.0EV)
Shutter type	Focal Plane Shutter
Movie recording File Format File size Frame rate Recording time	MOV (MPEG-4 AVC/H.264,Audio: Linear PCM / Stereo sound 24bit / 48KHz sampling) [DCI 4K(4096×2160)] 29.97p/25p/24p/23.98p 200Mbps/100Mbps up to approx. 30min [4K(3840×2160)] 29.97p/25p/24p/23.98p 200Mbps/100Mbps up to approx. 30min [Full HD(2048 ×1080)] 59.94p/50p/29.97p/25p/24p/23.98p 200Mbps/100Mbps up to approx. 30min. [Full HD(1920×1080)] 59.94p/50p/29.97p/25p/24p/23.98p 200Mbps/100Mbps up to approx. 30min. [Full HD(1920 x 1080) High speed rec.] 240p / 200p 200Mbps(recording) up to approx. 3min. 120p / 100p 200Mbps(recording) up to approx. 6min. *For recording movies, use a SD memory card with UHS Speed Class 3 or higher. *Recording time can become short depending on the temperature and/or shooting conditions
Flash modes Sync. mode Flash mode	TTL MODE (Flash Auto, Standard, Slow Sync.), Manual, Multi, OFF 1st Curtain, 2nd Curtain, AUTO FP (high-speed sync) RED EYE REMOVAL: FLASH + REMOVAL, FLASH, REMOVAL, OFF
LCD monitor	3.0 inch, aspect ratio 3:2, approx. 1.62 millions dots touch screen color LCD monitor(approx. 100% coverage)
Viewfinder	0.39 inch approx. 2.36 millions dots OLED Color Viewfinder Coverage of viewing area vs. capturing area: approx. 100% Eyepoint: approx. 17.5mm (from the eyepiece lens) Diopter adjustment: -4 - +2m-1 (lockable) Magnification: 0.62x with 50mm lens (35mm equivalent) at infinity and diopter set to -1m-1 Diagonal angle of view: approx. 31° (Horizontal angle of view: approx. 26°) Built-in eye sensor
Terminal Digital interface HDMI output Other	USB Type-C (USB3.2 Gen1x1) HDMI Micro connector (Type D) ø3.5mm, stereo mini connector (for Microphone and Remote Release), Hot shoe
Dimensions	(W) 121.3mm × (H) 72.9mm × (D) 32.7mm (minimum depth)
Weight	Approx. 364g (including battery and SD memory card) Approx. 315g (excluding battery and SD memory card)
Notes	*1 Please see the Fujifilm website to check SD memory card compatibility. *2 Exif 2.3 is a digital camera file format that contains a variety of shooting information for optimal printing.

FUJIFILM
X | GFX



HOME

  FUJIFILM_NORTHAMERICA

VISIT WWW.FUJIFILM-X.COM OR YOUR AUTHORIZED DEALER FOR MORE INFORMATION.

FUJIFILM and FUJINON are trademarks of FUJIFILM Corporation and its affiliates. © 2020 FUJIFILM North America Corporation and its affiliates. All rights reserved.