

FUJIFILM  
X | GFX



GFX 100S  
MORE THAN  
FULL FRAME



**GFX 100s**  
**MORE THAN**  
**FULL FRAME**



LARGE FORMAT  
**102 MEGAPIXEL**  
BSI CMOS SENSOR

X-PROCESSOR 4  
**QUAD-CORE**  
IMAGING ENGINE

ISO  
**100-12,800**  
SENSITIVITY RANGE

IN-BODY  
**5 AXIS**  
STABILIZATION



## 102MP BSI CMOS SENSOR

- 16-Bit RAW output
- 14 stops of Dynamic Range
- Quad-Core CPU X-Processor 4



## IN-BODY IMAGE STABILIZATION

- Up to 6 Stops of stabilization
- Works in tandem with O.I.S.
- 400MP Multi-Shot Pixel Shift function



## WEATHER RESISTANT BODY

- Magnesium alloy body (only 900g\*<sup>1</sup>)
- Sealed in approx. 60 places
- Shutter rated over 150K actuations



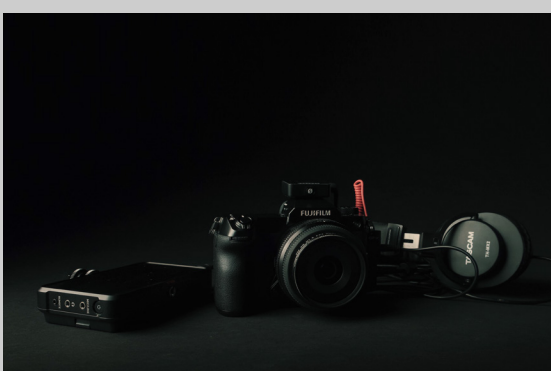
## PASM MODE DIAL

- Front/Rear command dial controls
- C1 to C6 position for photo & video
- Still / Movie selector for easy switching



## EXCEPTIONAL AF PERFORMANCE

- 425 AF Points with 100% Hybrid PDAF
- Focus down to -5.5 EV using PDAF\*<sup>2</sup>
- Face/Eye AF available in photo & video



## LARGE FORMAT 4K/30P VIDEO

- Professional 10-bit colour / H.265
- Selectable bitrate up to 400Mbps
- F-Log/HLG/12-bit Pro-Res Raw

\*1 including battery and sd card

\*2 When GF80mmF1.7 is attached



**GFX 100s**  
**MORE THAN**  
**FULL FRAME**



## KIT OPTIONS



**BODY ONLY**  
**MSRP: \$7,800**

## INCLUDED IN THE BOX

LI-ION BATTERIES NP-W235, AC POWER ADAPTER AC-5VJ, PLUG ADAPTER, USB CABLE, BODY CAP, SHOULDER STRAP, CABLE PROTECTOR, HOT SHOE COVER, HOT SHOE COVER, OWNER'S MANUAL

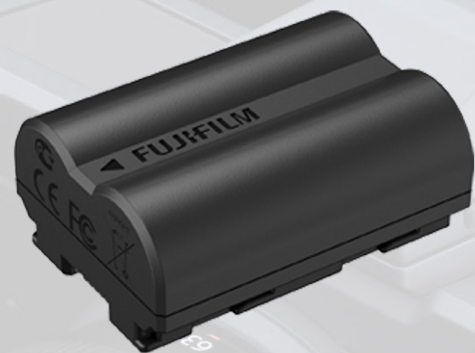
## ACCESSORIES



**DUAL BATTERY CHARGER**  
**BC-W235**  
**MSRP: \$100**



0 74101 20211 3



**LI-ION BATTERY**  
**NP-W235**  
**MSRP: \$100**



0 74101 20228 1



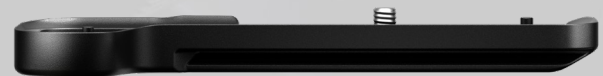
**MACRO EXTENSION TUBE**  
**MCEX-18G WR      MCEX-45G WR**  
**MSRP: \$410      MSRP: \$410**



0 74101 03656 5



0 74101 03698 5



**METAL HAND GRIP**  
**MHG-100S**  
**MSRP: \$195**



0 74101 20472 8



**GFX 100s**  
**MORE THAN**  
**FULL FRAME**



## 6 CUSTOM SETTINGS POSITIONS

Set the mode dial to one of the 6 custom setting positions (C1-C6) which can be assigned to frequently used settings. Adjustments made in the camera's menu will automatically be stored; select DISABLE in the AUTO UPDATE SETTING menu if you prefer not to have changes saved automatically.

## STUDIO FLASH PHOTOGRAPHY

If you are shooting with strobes in the studio, you will need to disable the exposure preview. Go to SET UP > SCREEN SETTING > PREVIEW EXP./WB IN MANUAL MODE and select OFF. This will disable the exposure and white balance preview. To quickly toggle between the 3 options, you can assign this to a FN button.



## SUB MONITOR CUSTOMIZATION

Go to MENU > SET UP > SCREEN SET-UP > SUB MONITOR SETTING and choose whether you want to change the STILL MODE or the MOVIE MODE options. Select INFORMATION and scroll to the section of the screen you want to change and press OK and select the settings you want to assign to the section.

## RESIZING THE AF POINT

Press and hold the joystick to access the FOCUS LEVER SETTING and select your desired mode. To change the AF point size, press inward on the joystick and the focus points will appear. Rotate the rear command dial to change the size of the AF Point / Zone. When the AF MODE is set to "ALL", rotating the rear command dial will also cycle through the various AF modes (SINGLE POINT, ZONE, WIDE)



**GFX 100s**  
**MORE THAN**  
**FULL FRAME**

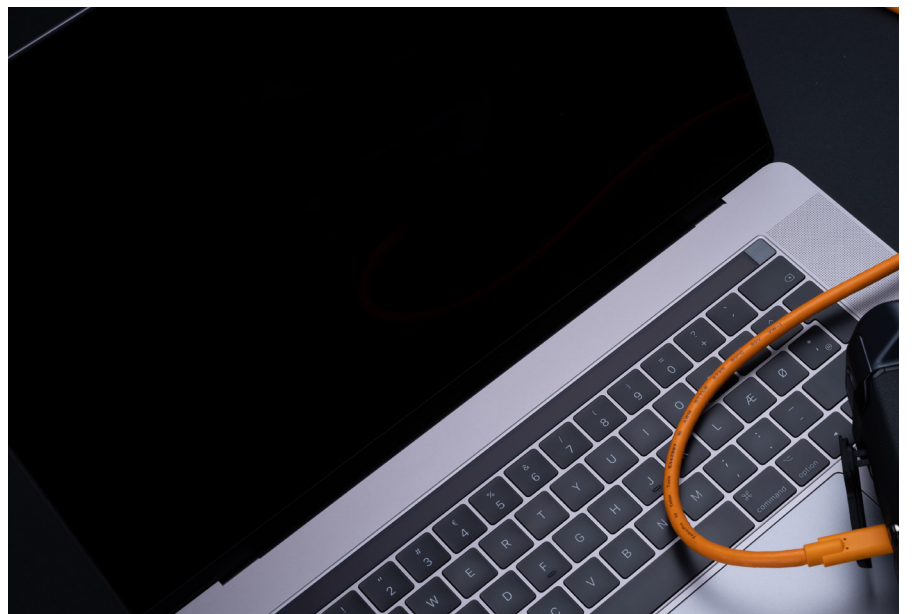
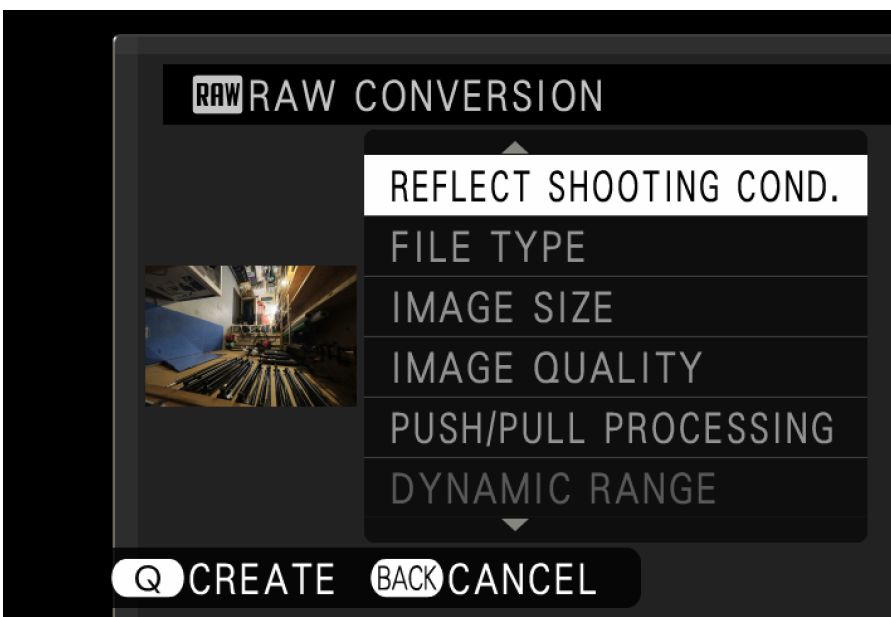


## SETTING UP FACE/EYE DETECTION

Intelligent Face Detection sets focus and exposure for human faces anywhere in the frame, preventing the camera from focusing on the background in portraits. You can also choose whether the camera detects and focuses on either the left or right eye. Go to MENU > AF/MF SETUP > FACE / EYE DETECTION SETTING to select your desired settings.

## CHANGING EXPOSURE SETTINGS

Rotate the rear command dial to change the shutter speed. To change the aperture using the command dial, set the aperture ring on the lens to "C". To change ISO, rotate the front command dial. When the aperture ring is set to "C", click on the front command dial to toggle between aperture/ISO controls.



## IN-CAMERA RAW CONVERSION

To edit a RAW image in the camera, select it in the playback mode then press the "Q" button. Scroll and adjust settings including: Film Simulation, Highlight tone, Sharpness and more. After making the adjustments, press the "Q" button to preview the image. Review the image on screen and press "OK" to save the file or "Back" to make additional adjustments.

## TETHERING WITH THE CAMERA

To set the camera for tethering, go to MENU > SET UP > CONNECTION SETTING > PC CONNECTION MODE and set it to USB AUTO. The camera is now ready to be connected to a computer for tethering. Adobe Lightroom users can download the free "FUJIFILM Tethering Shooting Plug-in PRO for GFX". Capture One users do not require any Plug-in for tethering.



**GFX 100s**  
**MORE THAN**  
**FULL FRAME**



## SPECIFICATIONS

**FUJIFILM**  
**X | GFX**

<b>Model Name</b>	FUJIFILM GFX 100s
<b>Number of effective pixels</b>	102 million pixels
<b>Image Sensor</b>	43.8mm×32.9mm Bayer array with primary color filter
<b>Storage media</b>	SD Card (-2GB) / SDHC Card (-32GB) / SDXC Card (-512GB) UHS-I / UHS-II / Video Speed Class V90 *1
<b>File format of still image</b>	JPEG (Exif Ver.2.3)*2, RAW : 14bit / 16bit RAW (RAF original format), RAW+JPEG, 8-bit / 16-bit (10-bit output in 16bit file) TIFF (In-camera Raw Conversion Only)
<b>Lens mount</b>	FUJIFILM G mount
<b>Sensitivity</b> <b>Stills</b> <b>Standard output</b> <b>Extended output</b> <b>Video</b> <b>Standard output</b> <b>Extended output</b>	AUTO1 / AUTO2 / AUTO3 / ISO100~12800 (1/3 step) ISO50 / ISO25600 / ISO51200 / ISO102400 AUTO / ISO200~12800 (1/3 step) ISO25600
<b>Exposure control</b>	TTL 256-zone metering, Multi / Spot / Average / Center Weighted
<b>Exposure mode</b>	P (Program AE) / A (Aperture Priority AE) / S (Shutter Speed Priority AE) / M (Manual Exposure)
<b>Exposure compensation</b>	-5.0EV - +5.0EV 1/3EV step (Movie: -2.0EV - +2.0EV)
<b>Shutter type</b>	Focal Plane Shutter
<b>Movie recording</b> <b>File Format</b> <b>File size</b> <b>Frame rate</b> <b>Recording time</b>	MOV (MPEG-4 AVC / H.264, HEVC / H.265, Audio : Linear PCM / Stereo sound 24bit / 48KHz sampling) All Intra/Long-GOP * All Intra can be used with following settings. DCI4K/4K 29.97p/25p/24p/23.98p 400Mbps Full HD(2048×1080)/Full HD(1920×1080) 59.94p/50p/29.97p/25p/24p/23.98p 200Mbps [DCI4K (4096×2160)] 29.97p / 25p / 24p / 23.98p 400Mbps/200Mbps/100Mbps up to Approx. 120min. [4K (3840×2160)] 29.97p / 25p / 24p / 23.98p 400Mbps/200Mbps/100Mbps up to Approx. 120min. [Full HD (2048×1080)] 29.97p / 25p / 24p / 23.98p 200Mbps/100Mbps/50Mbps up to Approx. 120min. [Full HD (1920×1080)] 29.97p / 25p / 24p / 23.98p 200Mbps/100Mbps/50Mbps up to Approx. 120min. * For recording movies, use a SD memory card with UHS Speed Class 3 or higher. * For recording movies in 400Mbps, use a SD memory card with Video Speed Class 60 or higher. * Recording movies in 400Mbps can be done with DCI4K/4K 29.97p/25p/24p/23.98p.
<b>Viewfinder</b>	0.5 inch Approx. 3.69 million dots OLED Color Viewfinder Magnification: 0.77× with 50mm Lens (35mm Equivalent) at infinity
<b>LCD monitor</b>	3.2 inch, Aspect Ratio 4:3, Approx. 2.36 million dots Tilt-Type (Three Direction), Touch Screen Color LCD Monitor (Approx. 100% Coverage)
<b>Terminal</b> <b>Digital interface</b> <b>HDMI output</b> <b>Other</b>	USB Type-C USB3.2 Gen1x1 HDMI Micro connector (Type D) ø3.5mm, stereo mini connector (Microphone) ø3.5mm, stereo mini connector (Headphone) ø2.5mm, Remote Release Connector Hot shoe Synchronized terminal
<b>Dimensions</b>	150mm (W) × 104.2mm (H) × 87.2mm (D) (Minimum Depth : 44mm)
<b>Weight</b>	Including battery and SD memory card Approx. 900g Excluding battery and SD memory card Approx. 821g
<b>Notes</b>	*1 Please see the Fujifilm website to check SD memory card compatibility. *2 Exif 2.3 is a digital camera file format that contains a variety of shooting information for optimal printing.

# FUJIFILM

---

## X | GFX



📷 📘 FUJIFILM\_NORTHAMERICA

VISIT [WWW.FUJIFILM-X.COM](http://WWW.FUJIFILM-X.COM) OR YOUR AUTHORIZED DEALER FOR MORE INFORMATION.

FUJIFILM and FUJINON are trademarks of FUJIFILM Corporation and its affiliates. © 2020 FUJIFILM North America Corporation and its affiliates. All rights reserved.